



Hi-Def Your Vision SG33G6 Deluxe



The new style of modern PC, Shuttle SG33G6 Deluxe based on the Intel® G33 Express Chipset is designed for the upcoming Intel® 45nm Core™ 2 multi-core processors platform. Featuring Intel® Graphics Media Accelerator 3100 with Intel® Clear Video Technology functionality provides high-quality video playback and sharp image quality enables a richer graphics experience.

Enjoy a life without cords with wireless connectivity provided by WiFi 802.11b+g or sync your images taken by mobile phone through integrated Bluetooth, and make the SG33G6 Deluxe mobile and conveniently. Sit back and enjoy a complete entertainment experience with visually stunning HD video delivered through HDMI output and the finest cinematic surround sound effects delivered by Dolby® Digital Live! and DTS™ Connect functionality.

Featuring fingerprint recognition technology, the SG33G6 Deluxe provides an added layer of security to ensure your personal documents and information are kept safe. In addition, data sharing is much faster and more convenient than before with e-SATA and innovative USB Speed-Link feature, which easily connects and shares data between 2 PCs.



SG33G6 Deluxe

Intel® G33 Express Chipset with HDMI

Experience true-to-life video quality from the latest Intel® G33 Express chipset with HDMI. Featuring the Intel® Graphics Media Accelerator 3100 with Intel® Clear Video technology for enhanced high-definition video playback and sharper image quality.



Finest Cinematic Surround Sound Experience

What would a home theater be without booming, immersive 7.1 channel surround sound? Experience state-of-the-art sound quality provided by Dolby® Digital Live and DTS™ Connect functionality



Advanced Security for Your Digital Information

With an added a layer of security protection through the integrated biometric fingerprint reader, you can keep your digital identity and data more secure and no longer worry about having to memorize for memorizing multiple passwords.



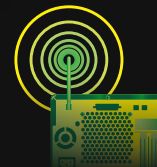
Innovative USB Speed-Link Technology

File sharing among 2 PCs has never been easier with the innovative USB Speed-Link technology, simply connects both systems through a USB cable without having the hassle of driver installation or worry about insufficient space of a DVD disc.



Seamless Connectivity

Enjoy the life of freedom without messy cords and cables, featuring WiFi 802.11b+g and Bluetooth functionality provide you the ease of connectivity to the Internet and peripherals.



All Solid Capacitors Motherboard Design

All solid capacitors design is the new trend for Shuttle's motherboard and guaranteed to deliver maximum stability, reliability and longer system lifetime for the ultimate PC gaming and entertainment experience.



Supports Windows® Vista™ Premium

Breathtaking Windows® Aero™ 3D visual interface and a host of groundbreaking new features, Windows® Vista™ Premium promises to deliver a streamlined computing experience designed to fundamentally change how users view, find and organize their digital information.



Specification

FORM FACTOR

- Shuttle Form Factor 310(L) x 200(W) x 185(H) mm
- Shuttle "G6" chassis (G5/G2 option)

PROCESSOR

- Intel® Core™ 2 Quad / Core™ 2 Duo / Core™ 2 / Duo E4000 series, Dual-Core E2000 series, Celeron 400 series Processor
- 800/1066/1333 MHz FSB
- LGA775 package

CHIPSET

- North Bridge Intel® G33
- South Bridge ICH9DH

MEMORY

- 2 dual channel DDR2 800MHz DIMM Slots (OC to 1066MHz)
- 2GB per DIMM Supports up to 4GB

VGA

- Build-in Intel® G33
- Intel® GMA3100, supports DX9, Intel® Clear Video Technology

AUDIO

- Realtek ALC888DD
- Supports Analog 7.1 channel output
- Supports Digital S/PDIF in/out
- Supports Dolby® Digital Live! and DTS™

LAN

- Marvell 88E8056 (PCI-E Interface)
- IEEE 802.3u 1000Base-T compliant

- 10Mb/s, 100Mb/s and 1000Mb/s operation
- Support Wake-On-LAN

STORAGE INTERFACE

- 1* UltraDMA 100 IDE channel connector
- 3* On board SATA 3.0Gb/s connectors
- 2* eSATA connectors in back panel
- 1* Floppy connector
- NCQ support

POWER SUPPLY

- 300W PSU with active PFC
- Input 100 - 240V AC
- EMI Certified FCC, CE, BSMI
- Safety Certified TUV, UL, CB, BSMI
- Power Plug region specific

EXPANSION BAY

- 2* 3.5" bay
- 1* 5.25" bay

FRONT PANEL

- 2* USB 2.0 ports
- 1* mini IEEE1394
- 1* Mic in
- 1* Earphone out
- 1* Power-on button
- 1* Reset button
- 1* Power indicator - blue
- 1* HDD indicator - orange
- 1* Speed Link button
- 1* Fingerprint Recognition
- 1* Bluetooth indicator
- 1* WiFi indicator

BACK PANEL

- 1* PCI Express x16 slot
- 1* PCI slot
- 4* USB 2.0 ports
- 1* RJ45 Gigabit Ethernet port
- 1* D-Sub port
- 1* Audio Line in connector
- 1* Audio Front out connector
- 1* Audio Rear surround connector
- 1* Audio Side surround connector
- 1* Audio Center/Bass connector
- 1* HDMI port
- 1* S/PDIF out port
- 2* e-SATA connectors
- 1* IEEE 1394 port
- 1* Clear CMOS button
- 1* Wireless Antenna fixture
- 1* Printer Port fixture

ACCESSORIES

- XPC Multilanguage Quick User Guide
- XPC CD Driver (XP/Vista 32bit, Bluetooth, WiFi, Fingerprint recognition)
- WiFi Installation guide
- Bluetooth Installation guide
- 1* Power cord
- 1* HDMI to DVI converter
- 1* IDE cable (pre-install)
- 1* SATA cable (pre-install)
- 1* Floppy cable
- Screws
- Heatsink Compound
- HDMI to DVI Converter