

PC55 Silent X 450W Power Supply



FEATURES

- SFF compatible 450W Power Supply
- Serial ATA ready
- Active PFC
- Smart Fan Temp-Speed control
- OVP/OCP/SCP protection
- Designed for the XPC



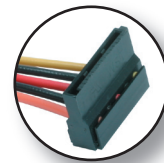
(1) PCI-E



(1) M/B



(1) M/B (CPU)



(3) SATA



(2) Molex

SPECIFICATIONS



Model	PC55	
Type	450W SFF power supply	
Input	Input Voltage	90-264V AC
	Input Current	7A/3.5A (100/240V AC)
	Frequency	47Hz / 63Hz
	Efficiency	>75% at full load
Output	Hold up time	>16ms at full load (@115V AC)
	Rise Time	<20ms at full load, nominal line
	Short circuit protection	latch off
	Power good signal	TTL compatible
Environmental	Operating Temp	10°C ~ 50°C
	Storage Temp	-40°C ~ 70°C
	MTBF	>100,000 hours at 75% load, 25°C
	Noise	<34dB
Safety	UL, CUL, TUV, CB, BSMI	
EMI	CE, FCC, BSMI	
Dimensions	Size	150 x 86 x 83 mm (l x w x h)
	Cable length	Cable lengths designed for the XPC
XPC compatibility	P/ P2 Series	

Shuttle Inc.® 2007, All Rights Reserved.

- * All other brand and product names within this page are the property of their respective owners.
- * Specifications subject to change without prior notification.