
XPC Bios User Guide

For the : DS61 Series

Shuttle®

XPC Installation Guide

Copyright

©2012 by Shuttle® Inc. All Rights Reserved.

No part of this publication may be reproduced, transcribed, stored in a retrieval system, translated into any language, or transmitted in any form or by any means such as electronic, mechanical, magnetic, optical, chemical, photocopy, manual, or otherwise, without prior written permission from Shuttle® Inc.

Other brands and product names used herein are for identification purposes only and may be trademarks of their respective owners.

Disclaimer

Shuttle® Inc. shall not be liable for any incidental or consequential damages resulting from the performance or use of this product.

Shuttle® Inc. makes no representation or warranty regarding the contents of this manual. Information in this manual had been carefully checked for accuracy; however, no guarantee is given as to the correctness of the contents. For continuing product improvement, Shuttle® Inc. reserves the right to revise the manual or make changes to the specifications of this product at any time without notice and obligation to any person or entity regarding such change. The information contained in this manual is provided for general use by customers.

This device complies to Part 15 of the FCC Rules. Operation is subject to the following two conditions:

1. This device may not cause harmful interference.
2. This device must withstand any background interference including those that may cause undesired operation.

Trademarks

Shuttle is a registered trademark of Shuttle Inc.

Intel and Pentium are registered trademarks of Intel Corporation.

PS/2 is a registered trademark of IBM Corporation.

AWARD is a registered trademark of Award Software Inc.

Microsoft and Windows are registered trademarks of Microsoft Corporation.

General Notice

Other brand and product names used herein are for identification purposes only and may be trademarks of their respective owners.

Safety Information

Read the following precautions before setting up a Shuttle XPC.

CAUTION

Incorrectly replacing the battery may damage this computer. Replace only with the same or equivalent as recommended by Shuttle. Disposal of used batteries according to the manufacturer's instructions.

Installation Notices

Do not place this device underneath heavy loads or in an unstable position.

Do not use or expose this device around magnetic fields as magnetic interference may affect the performance of the device.

Do not expose this device to high levels of direct sunlight, high-humidity or wet conditions.

Do not block the air vents to this device or impede the airflow in any way.

安全資訊

請在安裝Shuttle XPC前閱讀以下注意安全資訊。

警告

更換電池方式錯誤可能會損壞本電腦以及引發爆炸、火災或其他危險。

僅能依Shuttle的建議，以相同或同等的電池更換。

請依照製造商的使用說明處理廢電池。

安裝聲明

切勿在此設備上放置重物
或將其置於不穩定的位置。

切勿讓此設備暴露於陽光
直接照射、濕度高、或潮
濕的環境中。

切勿在磁場附近使用此設備，
否則磁場干擾會影響設備的性能。

切勿阻塞此設備的通風口
或者以任何方式妨礙空氣流
動。

安全信息

请在安装Shuttle XPC前阅读以下注意安全信息。

注意

更换电池方式错误可能会损坏本电脑。
仅能依Shuttle的建议, 以相同或同等的电池更换。
请依照制造商的使用说明处理废电池。

安装声明

切勿在此设备上放置重物
或将其置于不稳定的位置。

切勿让此设备暴露于阳光
直接照射、湿度高、或潮湿
的环境中。

切勿在磁场附近使用此设备，
否则磁场干扰会影响设备的性能。

切勿阻塞此设备的通风口
或者以任何方式妨碍空气流
动。

TABLE OF CONTENTS

Driver and Software Installation.....	1
Motherboard Driver DVD	1
User Manuals.....	2
Appendix.....	3
Starting BIOS.....	3
BIOS Setup Menu.....	3
Main Setup.....	5
Advanced	6
Power Management Configuration	7
CPU Configuration	8
SATA Configuration	10
USB Configuration	11
Hardware Health Configuration.....	12
OnBoard Device Configuration	13
Boot.....	15
Security	16
Save & Exit	18

Driver and Software Installation

■ Motherboard Driver DVD



The DVD contents attached in DS61 Series motherboard are subject to change without notice.

The Motherboard Driver DVD contains all the motherboard drivers necessary to optimize the performance of this Shuttle Xvision in a Windows® OS. Install these drivers after installing Microsoft® Windows®.

Insert the attached DVD into your DVD-ROM drive. The DVD AutoRun screen should appear. If the AutoRun screen does not appear, double click on Autorun icon in My Computer to bring up Shuttle Mainboard Software Setup screen.

Navigation Bar Description :

- ☞ Auto Install Driver/ Utility.
- ☞ Install ASMedia USB3.0 Driver.
- ☞ User Manuals - Motherboard Manual, Quick Guide.
- ☞ Link to Shuttle Website - Link to shuttle website homepage.
- ☞ Browse this DVD - Allows you to see contents of this DVD.



■ User Manuals

- ☞ [Install Adobe Reader 9.5](#)
- ☞ [Motherboard Manual](#)
- ☞ [Quick Guide](#)
- ☞ [Return to previous page](#)



Appendix

Starting BIOS

AMIBIOS has been integrated into many motherboards for over a decade. In the past, people often referred to the AMIBIOS setup menu as BIOS, BIOS setup, or CMOS setup.

American Megatrends refers to this setup as BIOS. Specifically, it is the name of the AMIBIOS8 BIOS setup utility. This chapter describes the basic navigation of the BIOS setup screens.

Enter the BIOS

To enter the BIOS setup screens, follow the steps below:

- Step1. Power on the motherboard.
- Step2. Press the <Delete> key on your keyboard when you see the following text prompt: **Press DEL to run Setup.**
- Step3. After you press the <Delete> key, the main BIOS setup menu displays. You can access the other setup screens from the main BIOS setup menu, such as the Chipset and Power menus.



This manual describes the standard look of the BIOS setup screen. The motherboard manufacturer has the ability to change any and all of the settings described in this manual. This means that some of the options described in this manual do not exist in your motherboard's AMIBIOS.



In most cases, the <Delete> key is used to invoke the BIOS setup screen. There are a few cases that other keys are used, such as <F1>, <F2>, and so on.

BIOS Setup Menu

The main BIOS setup menu is the first screen that you can navigate. Each main BIOS setup menu option is described in this user's guide.

The Main BIOS setup menu screen has two main frames. The left frame displays all the options that can be configured. "Grayed-out" options cannot be configured. Options in blue can be.

The right frame displays the key legend. Above the key legend is an area reserved for a text message. When an option is selected in the left frame, it is highlighted in white.

Often a text message will accompany it.



AMIBIOS8 has default text messages built into it. The motherboard manufacture retains the option to include, leave out, or change any of these text messages. They can also add their own text messages. Because of this, many screen shots in this manual are different from your BIOS setup screen.

The BIOS setup/utility uses a key-based navigation system called hot keys. Most of the BIOS setup utility hot keys can be used at any time during the setup navigation process. These keys include <F1>, <F10>, <Enter>, <ESC>, <Arrow> keys, and so on.



There is a hot key legend located in the right frame on most BIOS setup screens.

Hot Key	Description
→ Left ← Right	The Left and Right <Arrow> keys allow you to select a BIOS setup screen. For example: Main screen, Advanced screen, Chipset screen, and so on.
↑ Up ↓ Down	The Up and Down <Arrow> keys allow you to select an BIOS setup item or sub-screen.
+/- Plus/Minus	The Plus and Minus <Arrow> keys allow you to change the field value of a particular setup item. For example: Date and Time.
Tab	The <Tab> key allows you to select BIOS setup fields.
F1	The <F1> key allows you to display the General Help screen. Press the <F1> key to open the General Help screen.
F10	The <F10> key allows you to save any changes you have made and exit BIOS Setup. Press the <F10> key to save your changes. Press the <Enter> key to save the configuration and exit. You can also use the <Arrow> key to select Cancel and then press the <Enter> key to abort this function and return to the previous screen.
ESC	The <Esc> key allows you to discard any changes you have made and exit the BIOS Setup. Press the <Esc> key to exit the BIOS setup without saving your changes. Press the <Enter> key to discard changes and exit. You can also use the <Arrow> key to select Cancel and then press the <Enter> key to abort this function and return to the previous screen.
Enter	The <Enter> key allows you to display or change the setup option listed for a particular setup item. The <Enter> key can also allow you to display the setup sub-screens.

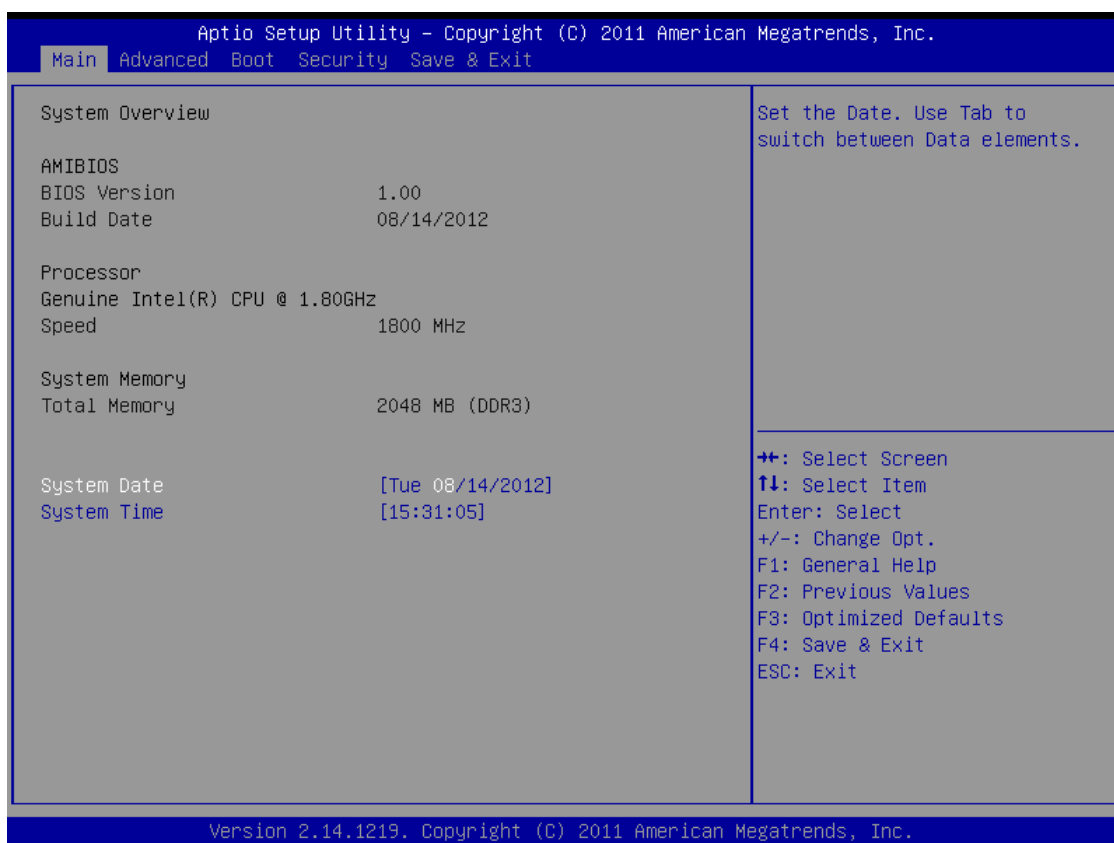


The <F8> key on your keyboard is the Fail-Safe key. It is not displayed on the BIOS key legend by default. To set the Fail-Safe settings of the BIOS, press the <F8> key on your keyboard. It is located on the upper row of a standard 101 keyboard. The Fail-Safe settings allow the motherboard to boot up with the least amount of options set. This can lessen the probability of conflicting settings.

Main Setup

When you first enter the BIOS Setup Utility, you will enter the Main setup screen.

You can always return to the Main setup screen by selecting the Main tab. There are two Main Setup options. They are described in this section. The Main BIOS Setup screen is shown below.



System Time/System Date

Use this option to change the system time and date. Highlight System Time or System Date using the <Arrow> keys. Enter new values through the keyboard. Press the <Tab> key or the <Arrow> keys to move between fields. The date must be entered in MM/DD/YY format. The time is entered in HH:MM:SS format.



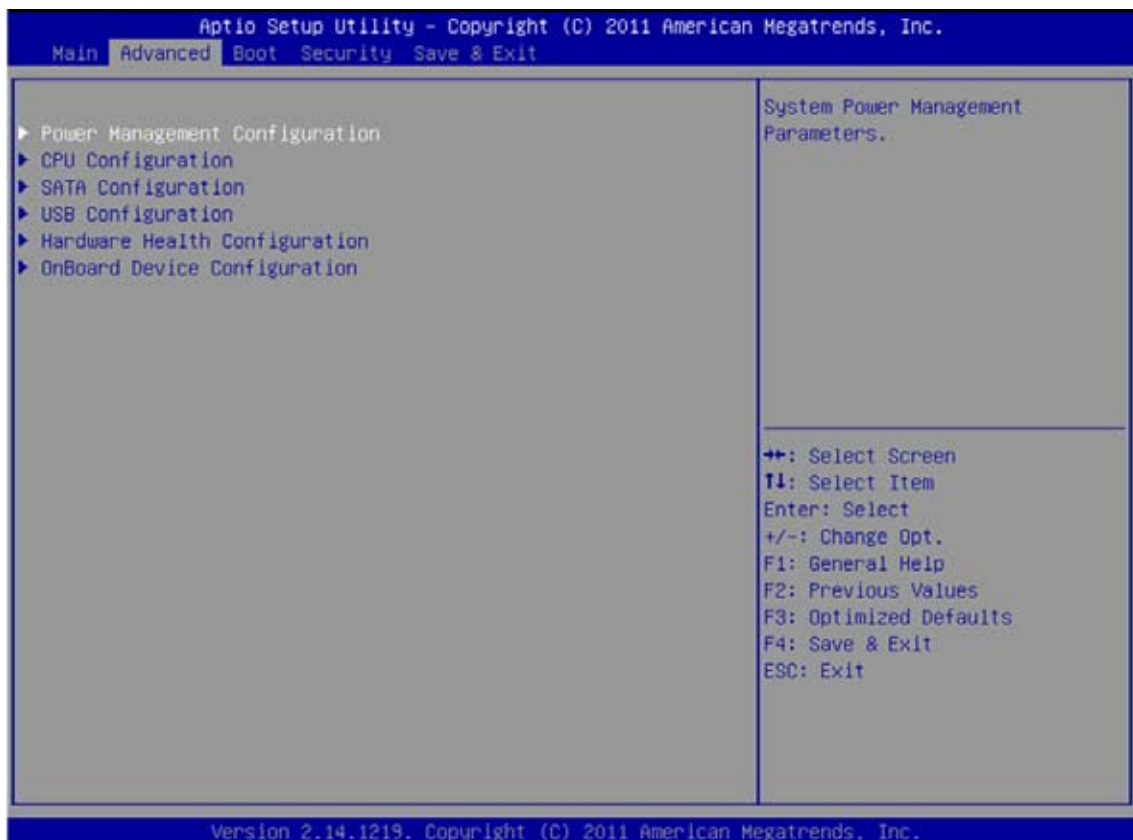
The time is in 24-hour format. For example, 5:30 A.M. appears as 05:30:00, and 5:30 P.M. as 17:30:00.

Advanced

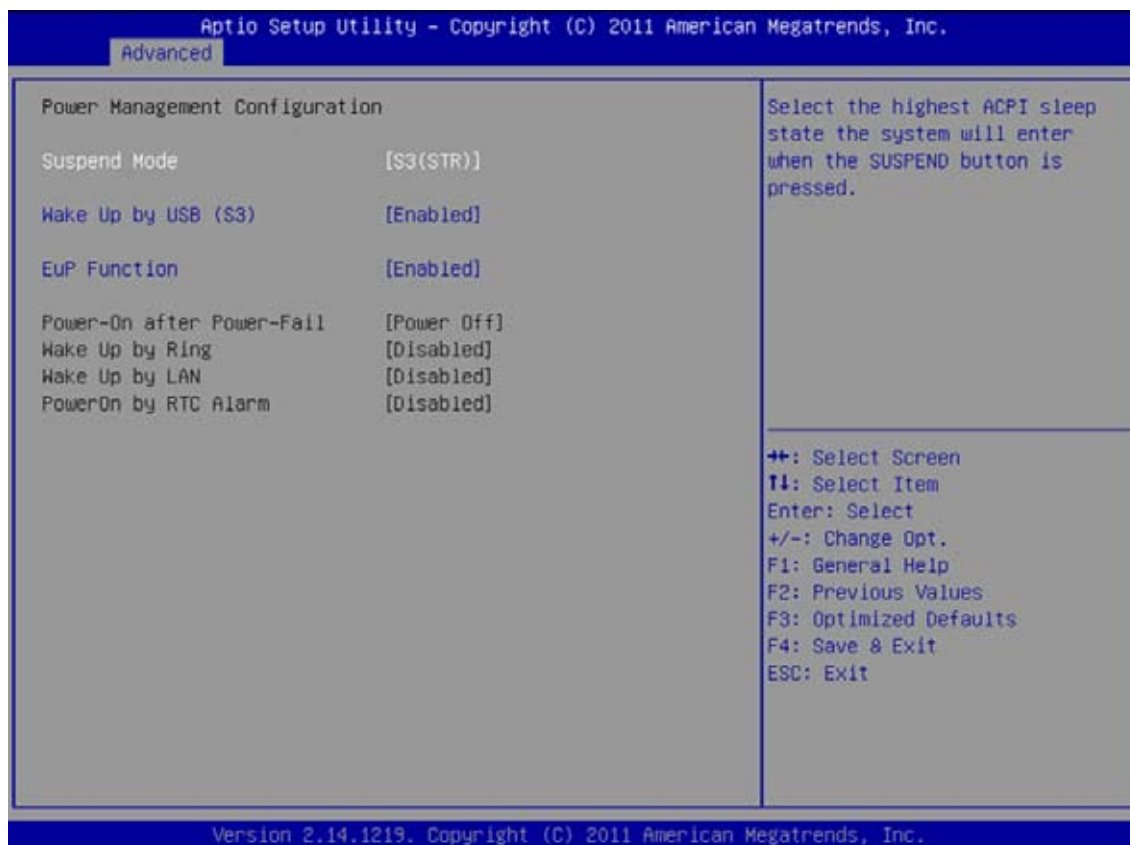
Select the Advanced tab from the BIOS setup screen to enter the Advanced BIOS Setup screen. You can select any of the items in the left frame of the screen, such as CPU Configuration, to go to the sub menu for that item.

You can display an Advanced BIOS Setup option by highlighting it using the <Arrow> keys. All Advanced BIOS Setup options are described in this section.

The Advanced BIOS Setup screen is shown below. The sub menus are described on the following pages.



➤ Power Management Configuration



Suspend Mode

Select the highest ACPI Sleep state the system will enter when the SUSPEND button is pressed.

- The choice: S1 (CPU Stop Clock) , S3(STR).

Wake Up by USB (S3)

Enable or disable system wake up by USB (S3).

- The choice: Enabled , Disabled.

EuP Control Function

Enable or disable system EuP function in S4/S5.

- The choice: Enabled , Disabled.

PWR-On After PWR-Fail

Enable or disable system power on automatically after AC power restored.

- The choice: Power Off, Power On, Former-Sts and PowerOn by LAN.

Wake Up by Ring

Enable or disable system wake up by Ring.

- The choice: Enabled , Disabled.

Wake Up by LAN

Enable or disable system wake on by onboard LAN chip.

- The choice: Enabled , Disabled.

PowerOn by RTC Alarm

When enabled, System will wake on the hr::min::sec specified.

- The choice: Enabled , Disabled.

➤ CPU Configuration

You can use this screen to select options for the CPU Configuration Settings. Use the up and down <Arrow> keys to select an item. Use the <Plus> and <Minus> keys to change the value of the selected option. A description of the selected item appears on the right side of the screen. The settings are described on the following pages. An example of the CPU Configuration screen is shown below.





The CPU Configuration setup screen varies depending on the installed processor.

Hyper-threading

Enabled for Windows XP and Linux (OS optimized for Hyper-Threading Technology) and Disabled for other OS (OS not optimized for Hyper-Threading Technology). When Disabled only one thread per enabled core is enabled.

➤ The choice: Enabled , Disabled.

Active Processor Cores

Number of cores to enable in each processor package.

➤ The choice: All,1,2,3.

Limit CPUID Maximum

Disabled for Windows XP and later OSes.

➤ The choice: Enabled , Disabled.

Intel (R) V. T.

When enable, a VMM can utilize the additional hardware capabilities provided by vanderpool Technology.

➤ The choice: Enabled , Disabled.

EIST

Enable or disable Enhanced Intel SpeedStep® Technology.

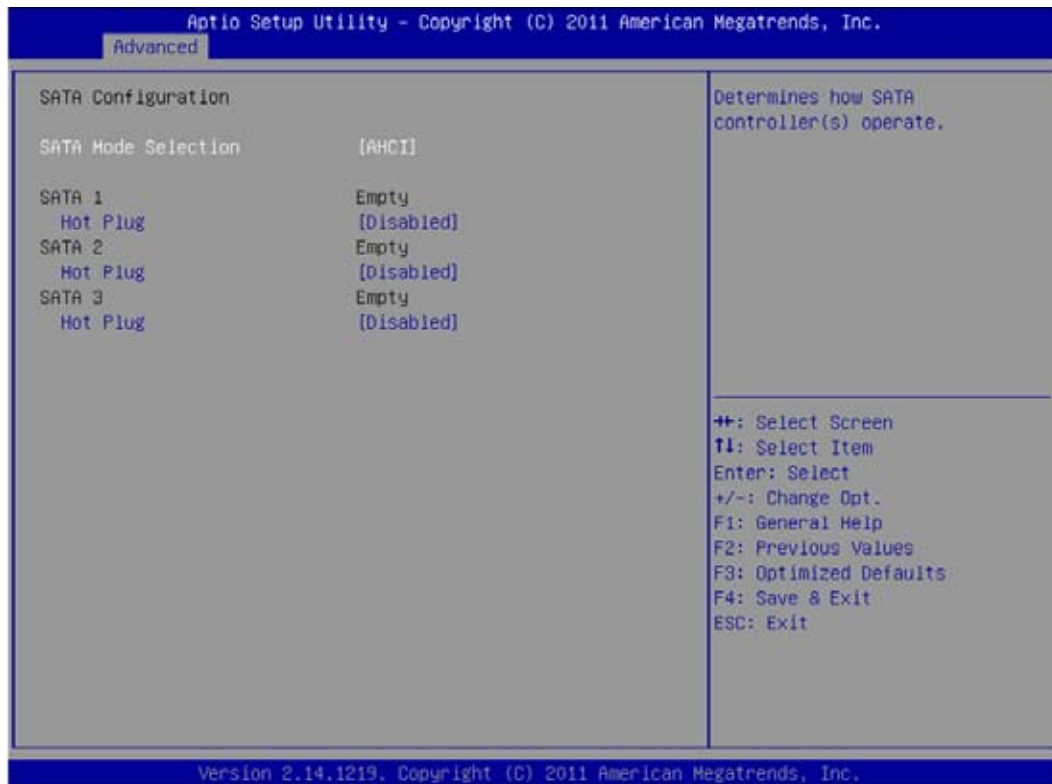
➤ The choice: Enabled , Disabled.

C State Support

Enable or disable C1E enhanced halt stat.

➤ The choice: Enabled , Disabled.

➤ SATA Configuration



SATA Mode Selection

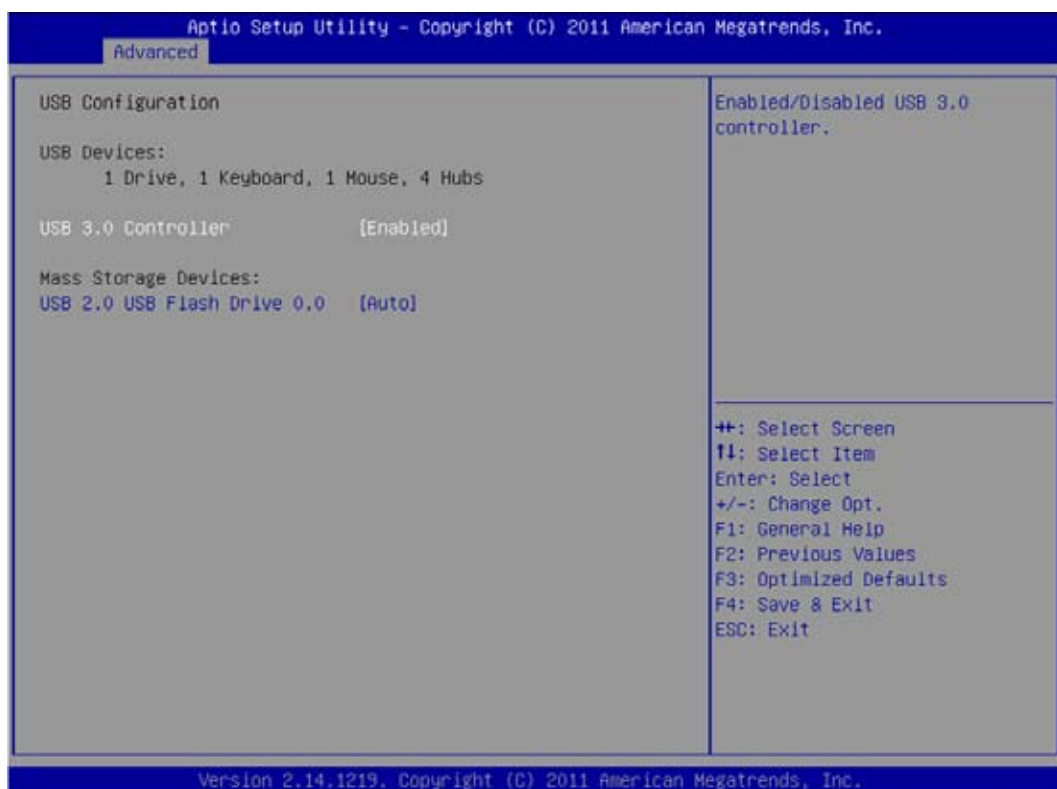
(1) IDE Mode. (2) AHCI Mode.

Hot Plug

Enable or disable Hot Plug capability.

➤ The choice: Enabled , Disabled.

➤ USB Configuration

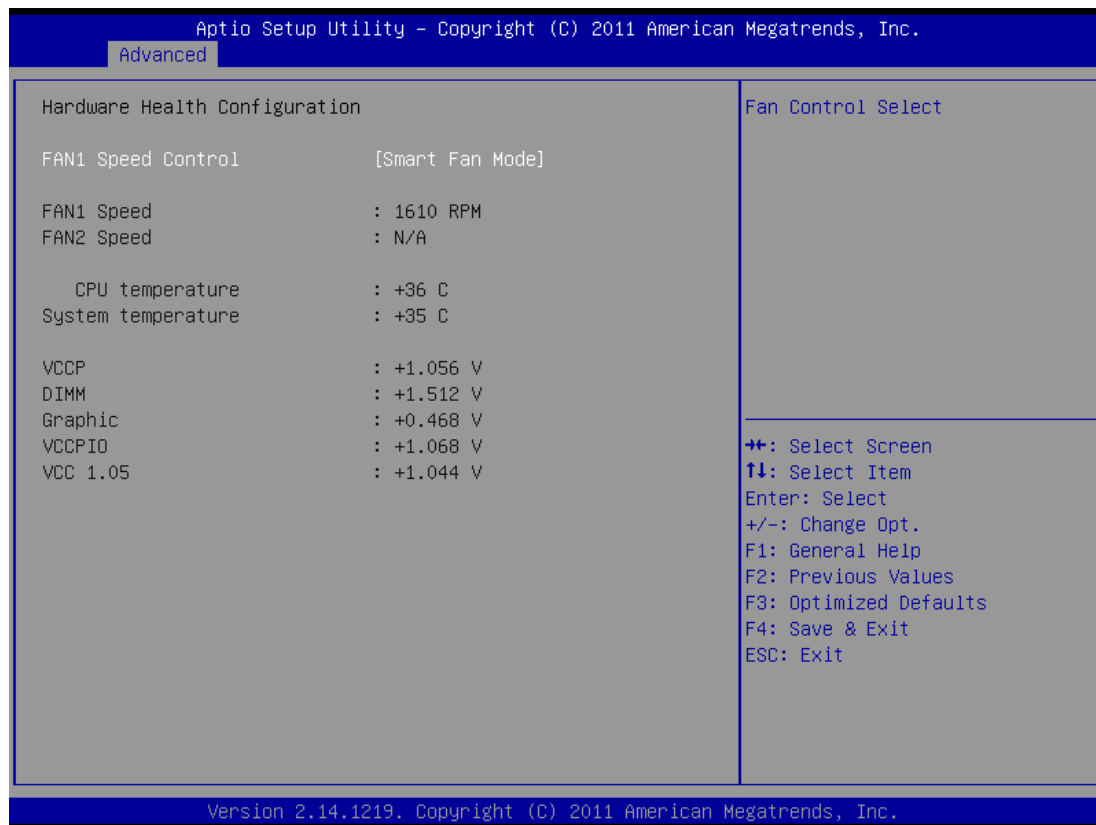


USB 3.0 Controller

Set this value to allow the system to enable or disable the onboard USB 3.0 Controller.

- The choice: Enabled, Disabled.

➤ Hardware Health Configuration

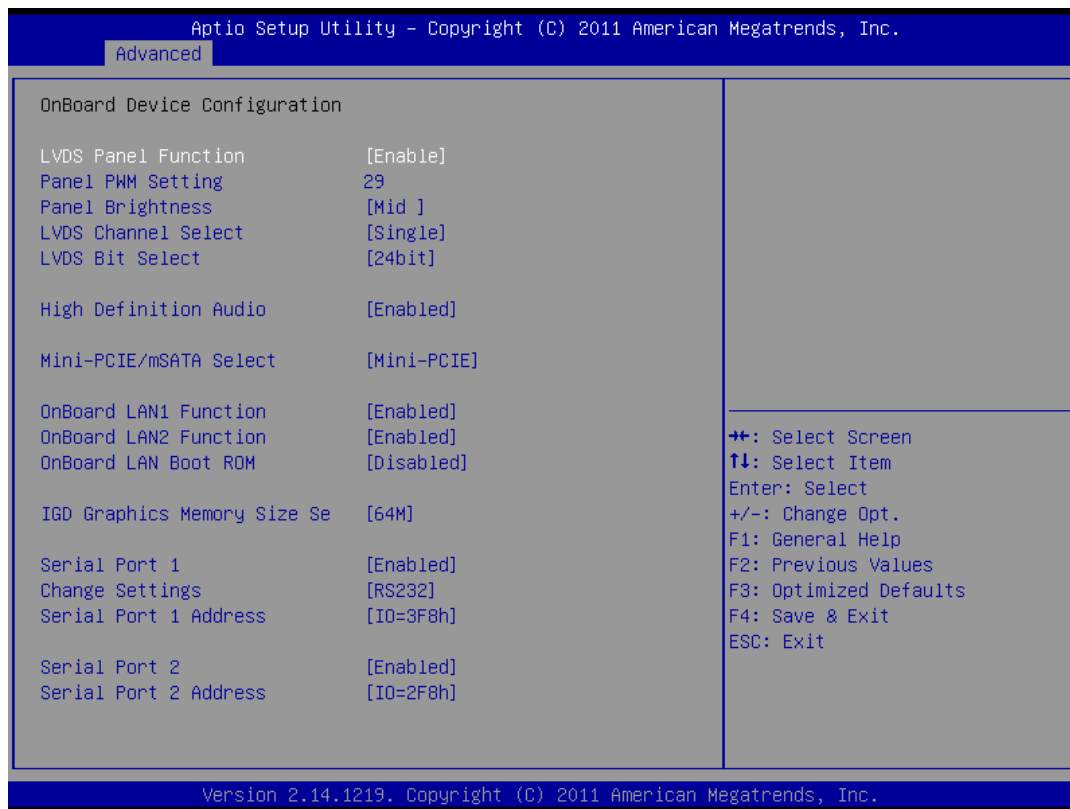


FAN1

Fan Speed Control function.

- The choice: Smart Fan Speed, Ultra-Low Mode, Low Mode, Mid Mode, Full Mode.

➤ OnBoard Device Configuration



LVDS Panel Function

This item allows you to enable or disable the LVDS function.

- The choice: Enabled , Disabled.

Panel PWM Setting

This item allows you to input PWM setting.

- The choice: 0~255.

LVDS Channel Select

This item allows you to switch type of LVDS data channel.

- The choice: Single, Dual.

LVDS Bit Select

This item allows you to switch type of LVDS data bit.

- The choice: 18bit, 24bit.

High Definition Audio

This item allows you to enable or disable the HD Audio.

- The choice: Enabled , Disabled.

mSATA Function

This item allows you to set the mSATA Function.

- The choice: Auto, Manual.

Onboard LAN1 / LAN2 Function

This item allows you to enable or disable the onboard LAN function.

- The choice: Enabled , Disabled.

Onboard LAN Boot ROM

This item allows you to enable or disable the onboard LAN boot ROM.

- The choice: Enabled , Disabled.

Initiate Graphic Adapte

Select which graphics controller to use as the primary boot device.

- The choice: PCIE, Onboard.

IGD Graphics Memory Size Se

Onboard IGD Graphics Memory Size.

- The choice: 32M,64M,128M,256M,512M.

Serial Port 1 / Serial Port 2

Enable or disable system Serial Port 1 / Serial Port 2.

- The choice: Enabled , Disabled.

Charge Settings

This item allows you to switch type of COM1.

- The choice: RS232, RS422 and RS485.

Serial Port 1/2 Address

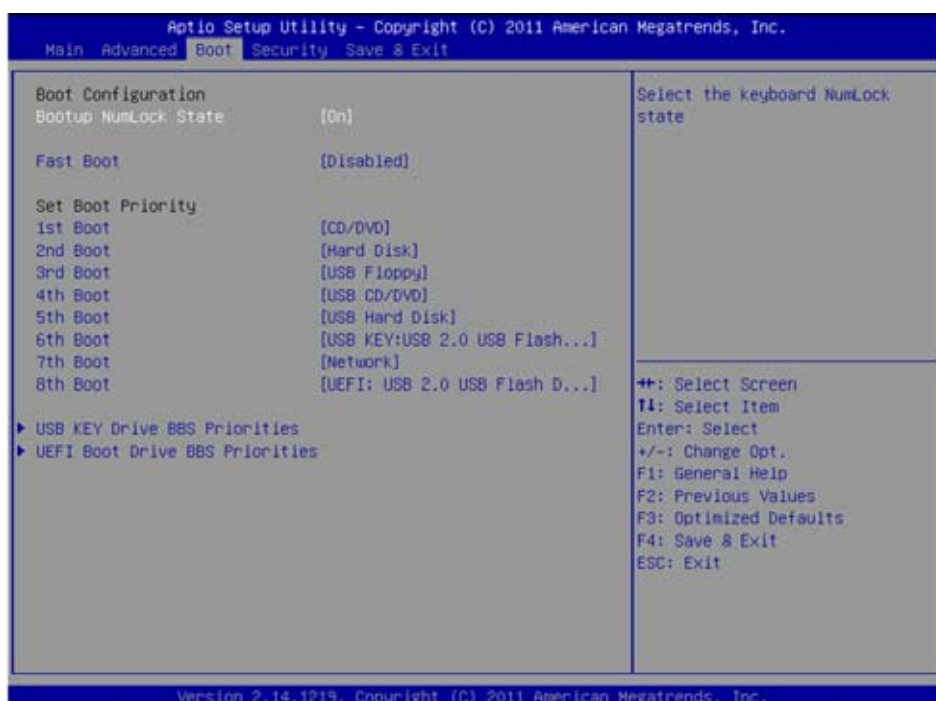
- The choice: IO=3F8h,IO=2F8h,IO=3E8h,IO=2E8h.

Boot

Select the Boot tab from the BIOS setup screen to enter the Boot BIOS Setup screen. You can select any of the items in the left frame of the screen, such as Boot Settings Configuration, to go to the sub menu for that item.

You can display an Boot BIOS Setup option by highlighting it using the <Arrow> keys. All Boot BIOS Setup options are described in this section.

The Boot BIOS Setup screen is shown below. The sub menus are described on the following pages.



Bootup NumLock State

Select NumLock state after system bootup.

- The choice: On, off.

Fast Boot

Enabled/Disabled Fast Boot

- The choice: Enabled , Disabled.

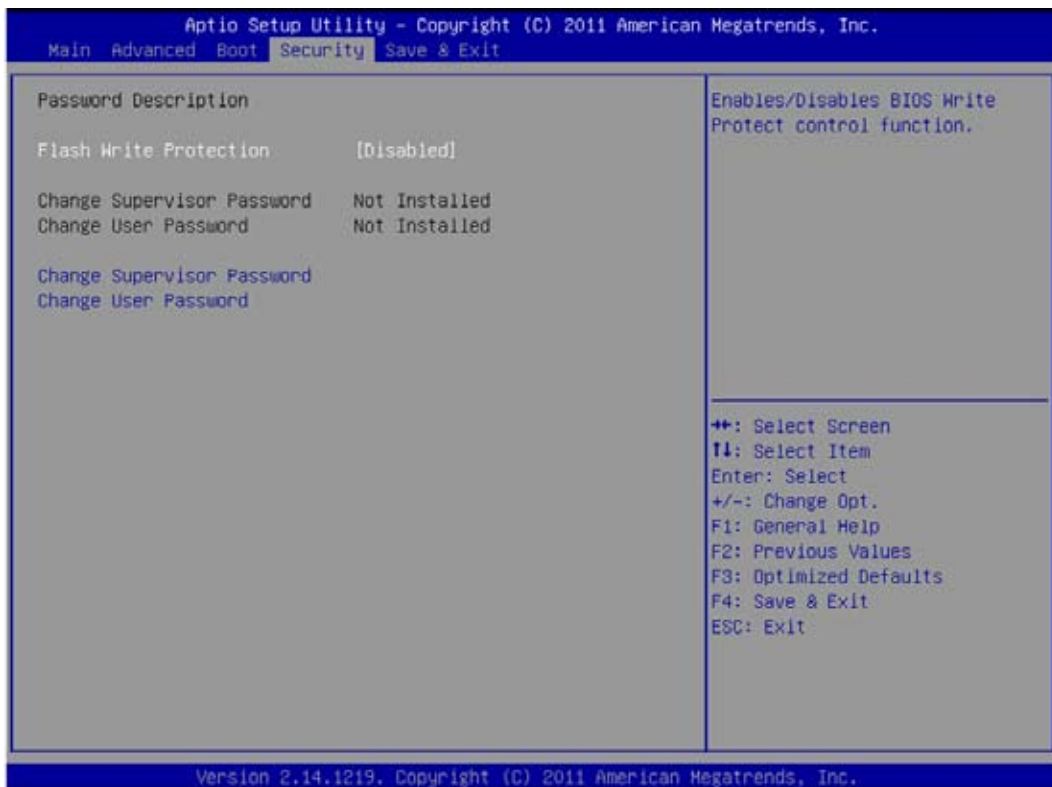
Set Boot Priority (1st/2nd/3rd/..... Boot)

Specifies the boot sequence from the available devices. A device enclosed in parenthesis has been disabled in the corresponding type menu.

Security

Select the Security tab from the BIOS setup screen to enter the Security BIOS Setup screen. You can display an Security BIOS Setup option by highlighting it using the <Arrow> keys. All Security BIOS Setup options are described in this section.

The Security Setup screen is shown below. The sub menus are documented on the following pages.



Flash Write Protection

Enabled/Disabled BIOS Write Protection control function.

➤ The choice: Enabled , Disabled.

Change Supervisor Password

When this item is selected, a message box shall appear on the screen as below:

Enter New Password

Type a maximum of 6-digit password and press [Enter]. The password typed now will replace any previously set password from CMOS memory. You may also press [ESC] to abandon new password setting.

When the Supervisor Password is set, new items Change User Password and Password Check will be added in the menu.

Select Change User Password to give or to abandon password setting same as Change Supervisor Password item above.

Note that Supervisor Password field allows users to enter and change the settings of the BIOS SETUP UTILITY, while User Password field only allows users to enter the BIOS SETUP UTILITY without having the authorization to make any change.

The Password Check item is used to specify the type of BIOS password protection that is implemented. Settings are described below:

Setup	The password is required only when users try to access to BIOS SETUP UTILITY.
Always	The password is required every time when the Notebook is powered on or when users try to access to BIOS SETUP UTILITY.

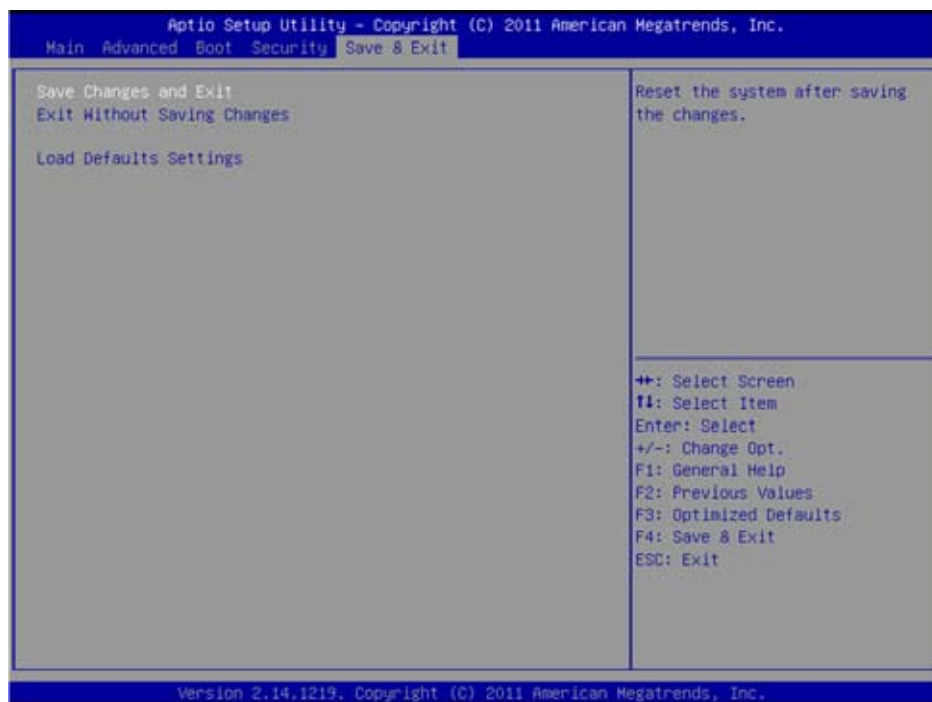
To clear a set Supervisor Password/ User Password, just press [Enter] under Change Supervisor Password/ Change User Password field when you are prompted to enter the password. Please note that when Supervisor Password has been cleared, User Password will be cleared as well. A message box will pop up confirming password will be disabled. Once the password is disabled, the system will boot and user can enter setup without entering password.

Save & Exit

Select the Exit tab from the BIOS setup screen to enter the Exit BIOS Setup screen.

You can display an Exit BIOS Setup option by highlighting it using the <Arrow> keys. All Exit BIOS Setup options are described in this section.

The Exit BIOS Setup screen is shown below.



Save Changes and Exit

When you have completed the system configuration changes, select this option to leave BIOS Setup and reboot the computer so the new system configuration parameters can take effect.

Select "Save Changes and Exit" from the Exit menu and press <Enter>.

Save Configuration Changes and Exit Now?

[Ok] [Cancel]

appears in the window. Select Ok to save changes and exit.

Exit Without Saving Changes

Exit system setup without saving any changes.

Load Defaults Settings

Load Optimal Default values for all the setup questions.