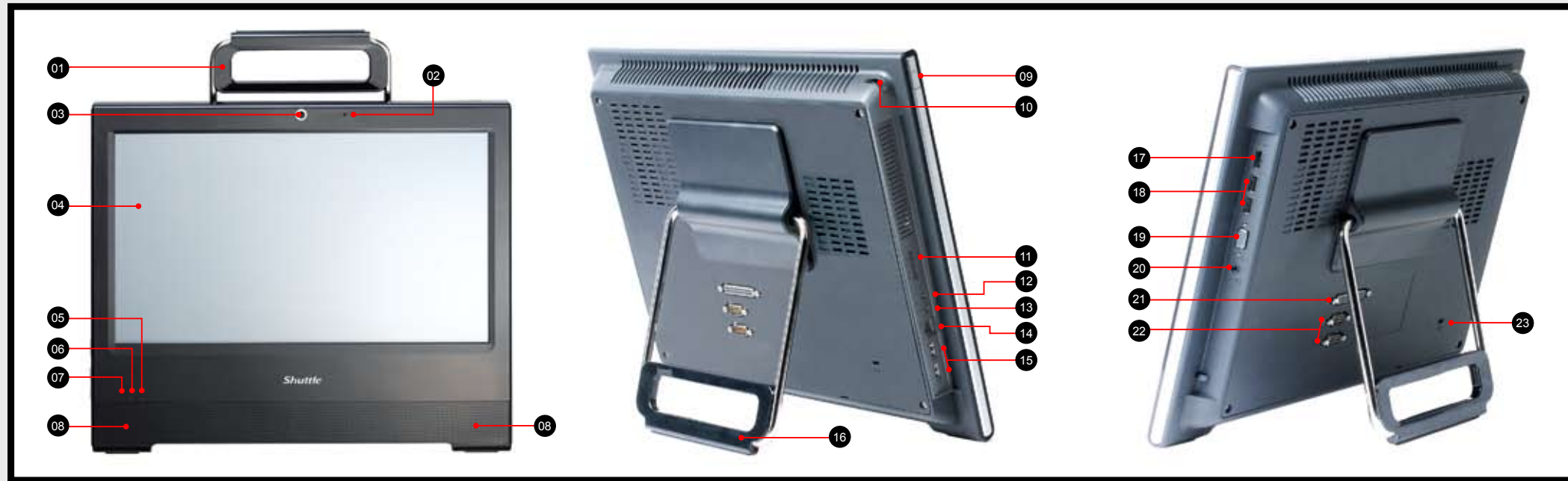




## Front/Rear/Side View



- 01 Stand / Handle
- 02 Microphone
- 03 Webcam
- 04 LCD Display (Single Touch / Non Touch)(Optional)
- 05 WiFi LED
- 06 Hard disk drive LED
- 07 Power LED
- 08 Stereo speakers

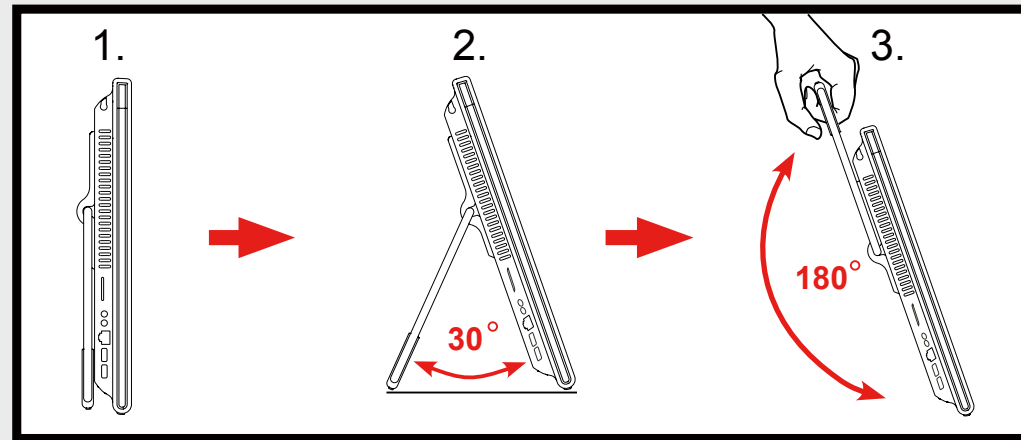
- 09 Power Button
- 10 Stylus pen
- 11 4-in-1 Memory card reader
- 12 Microphone Jack
- 13 Headphone / Line-out Jack
- 14 LAN Port
- 15 USB 2.0 Ports
- 16 Stand / Handle

- 17 HDMI Port
- 18 USB 2.0 Ports
- 19 VGA Port
- 20 Power Input
- 21 Printer Port (Optional)
- 22 COM Ports (Optional)
- 23 Kensington® Lock Port

## Placing on the desk

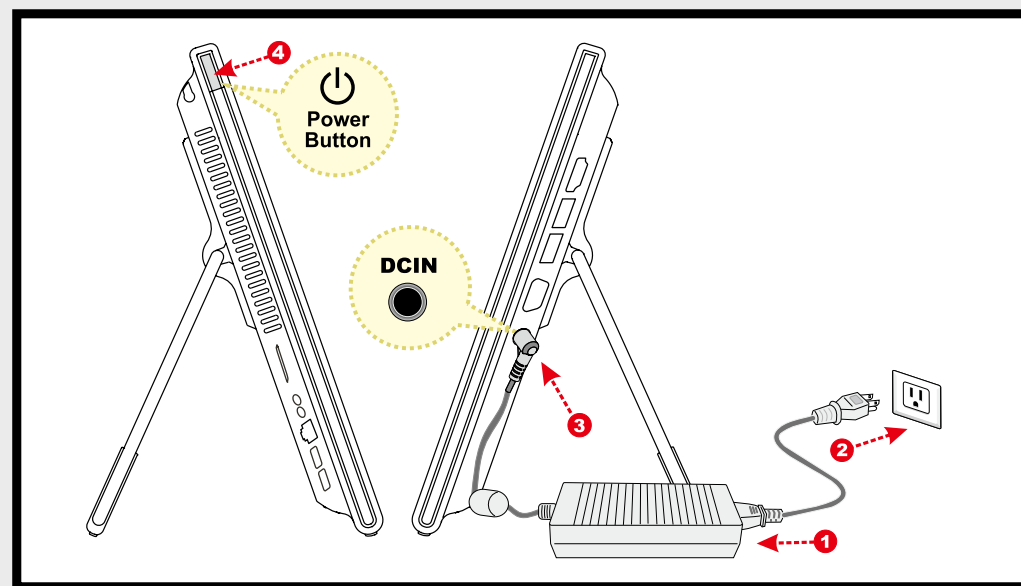
- To place the machine on the desk and to carry it, do the following:

Place the X50V3 on a flat surface such as a table (Picture 1), and pull the stand upwards to an angle of 30° (Picture 2). To carry or move your X50V3 fully extend the angle to 180° (Picture 3).



## Powering on the system

- Follow the steps (1~3) below to connect the AC adapter to the DCIN jack. Press the **Power Button** to turn on the system.



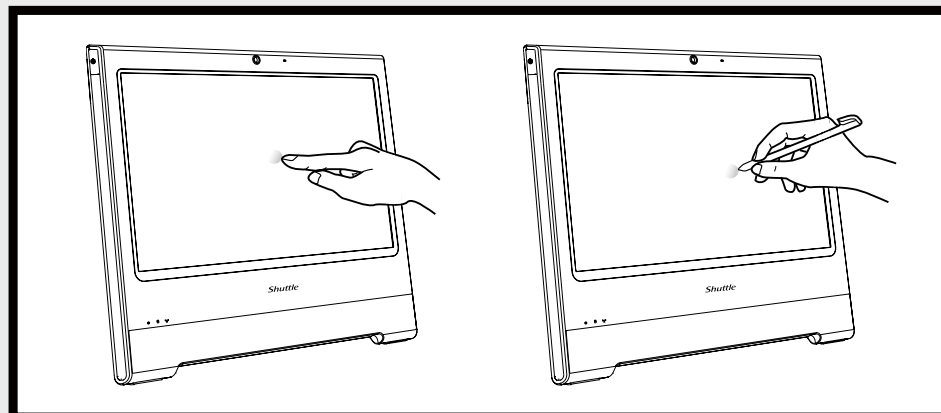
## Cleaning the screen

- Follow these guidelines for cleaning the outside and handling the screen of the computer:  
Turn off the system and disconnect all cables.  
Use a damp, or cleaning cloth, soft, lint-free cloth with gentle water only and gently wipe the screen surface.  
Do not spray liquid directly on the screen.

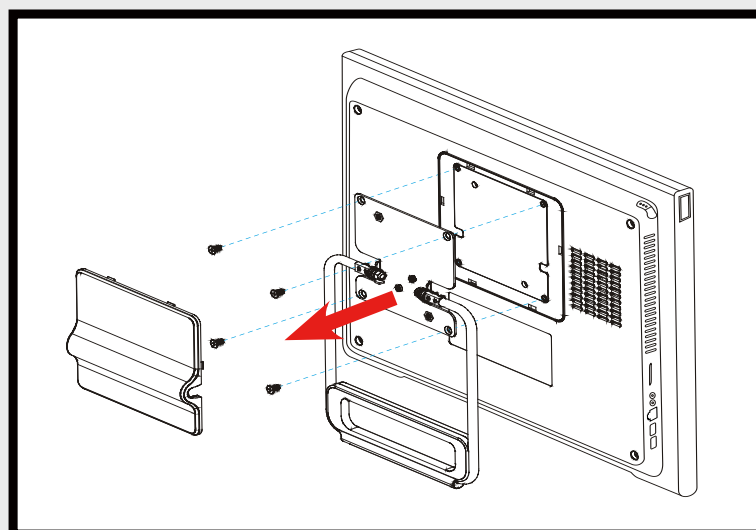
## How to use the Touch Panel (Optional)

- X50V3 brings digital life for an easy touch experience. Experience the ease of managing your digital life with a few touches or the use of the stylus pen. The touch of your finger replaces the mouse and is all you need to interact with the X50V3.

- Touch = left-click on the mouse
- Touch and hold = right-click on the mouse



## VESA mounting it to the wall



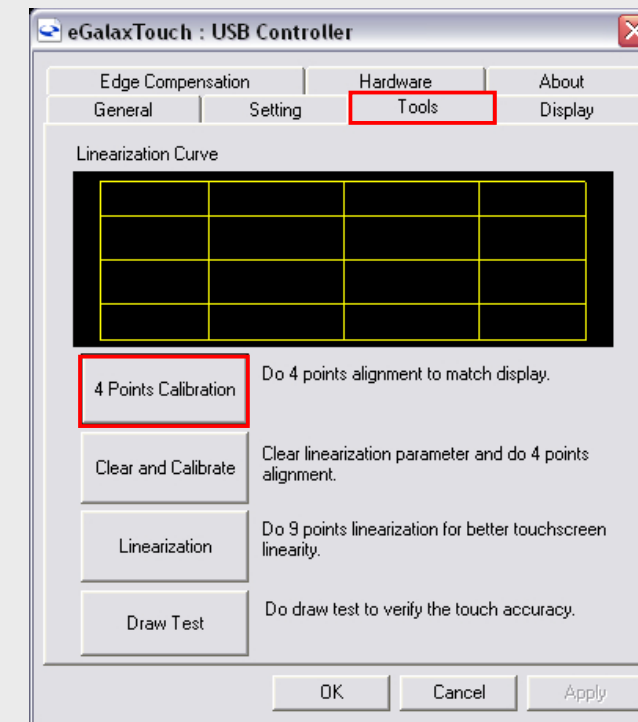
- If you are mounting your X50V3 to the wall, remove the cover on the back of X50V3 first.  
Unscrew 4 screws of the stand mount and remove the stand.  
The VESA standard lets users mount it on to walls easily.  
Please refer to the user guide of the wall/arm mount kit you bought to install it.  
  
Note : X50V3 can be mounted to a wall using a VESA compatible 100 x 100mm wall/arm bracket.

## 4 Point Calibration (Optional)

- Run the screen calibration program and correct 4 point locations on screen with the panel.

Click **Start / All Programs / eGalax Touch / Configure Utility**

Select **[Tools]** tab and click **[4 Points Calibration]**



## Safety Information

Read the following precautions before setting up a Shuttle X50V3.

### CAUTION

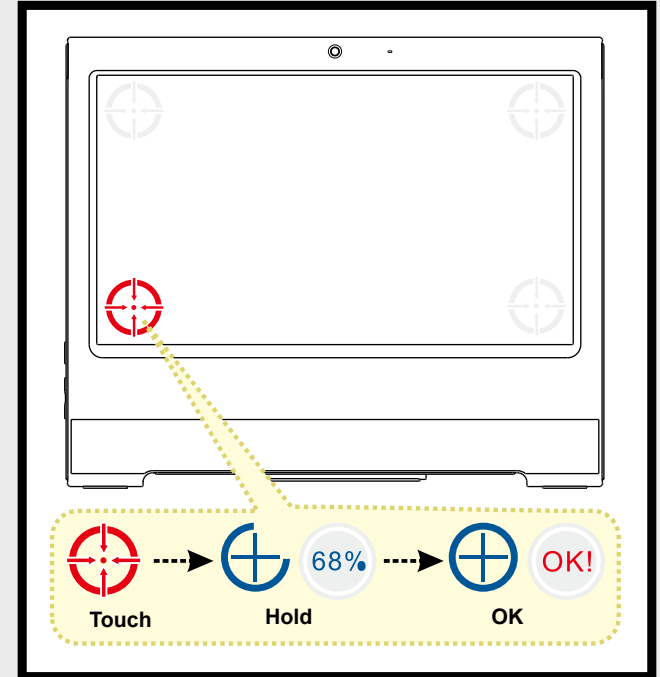
Do not walk on the power cord or allow anything to rest on it.  
The warranty does not apply to the products that have been disassembled by users.

### CAUTION

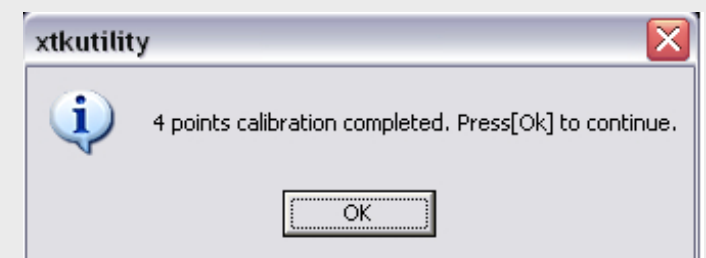
Danger of explosion if battery is incorrectly replaced. Replace only with the same or equivalent type recommended by the manufacturer.

Dispose of used batteries according to the manufacturer's instructions.

- Touch and hold the center of the target.  
Repeat on four corners and the screen will adjust automatically.



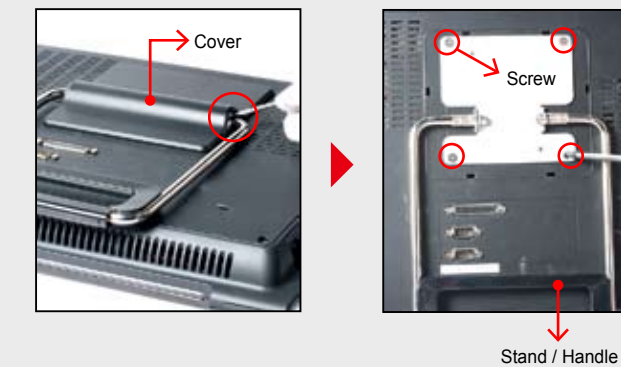
- When the 4 points calibration completed, press **[OK]** to continue.



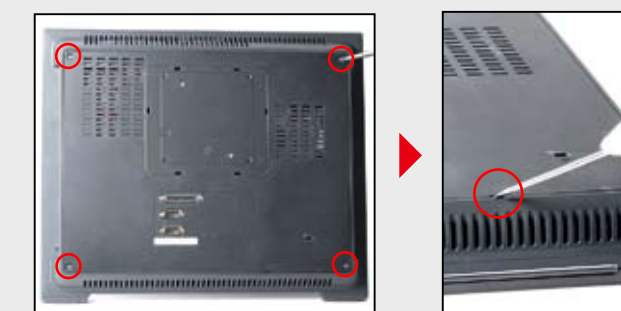
## A. Begin Installation

- ⚠ For safety reasons, please ensure that the power cord is disconnected before opening the case.

1. Remove the cover on the back of X50V3 first, unscrew four screws of the stand mount and remove the stand.

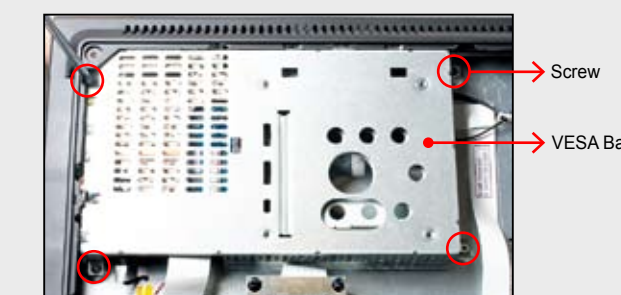


2. Unscrew four screws of the back cover and remove it.

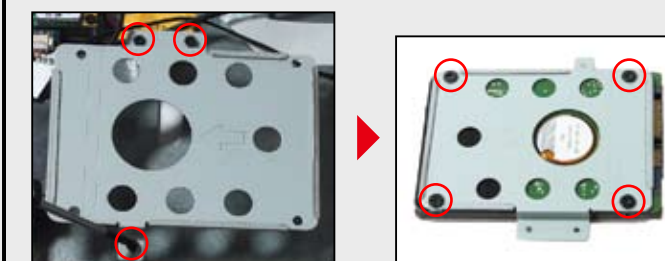


## B. HDD Installation

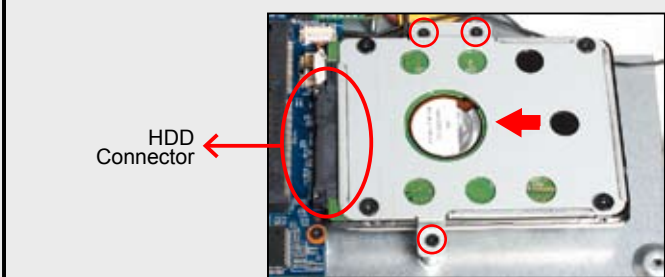
1. Unscrew four screws of the VESA Base and remove it first.



2. Unscrew three screws of the bracket and remove it.
3. Mount HDD into the bracket with four screws.



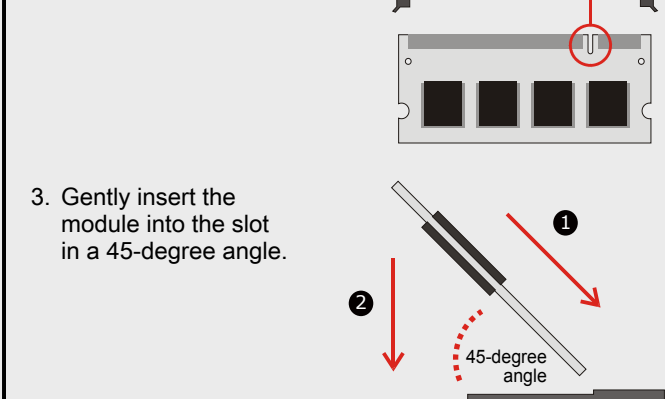
4. As shown, install the HDD & bracket in the chassis and push it towards the direction as indicated by the red arrow to connect the HDD connector.
5. Tighten the HDD & bracket with three screws.



## C. Memory Module Installation

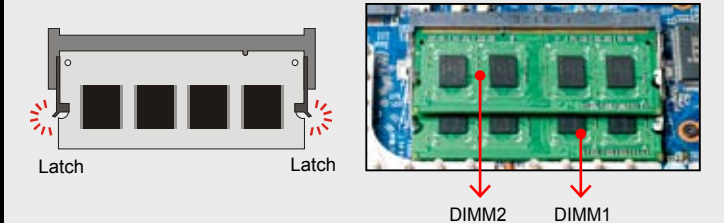
- ⚠ If you install only one memory module in your system, install it in the slot labeled "DIMM2".

1. Locate the SODIMM slot on the mainboard.
2. Align the notch of the memory module with the one of the memory slot.

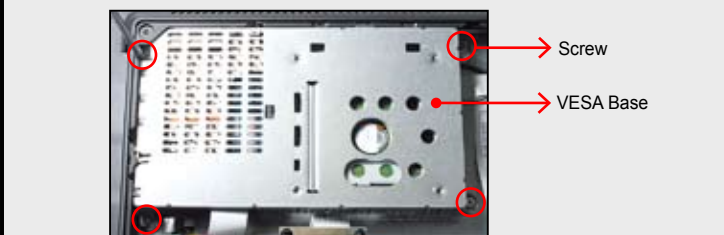


3. Gently insert the module into the slot in a 45-degree angle.

4. Carefully push down the memory module until it snaps into the locking mechanism.
5. Repeat the above steps to install additional memory modules, if required.

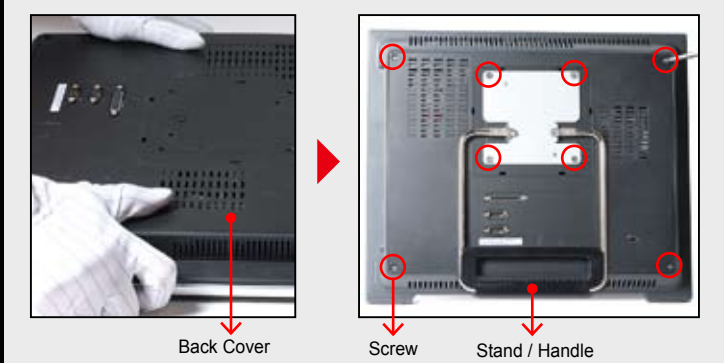


6. Replace the VESA Base and refasten four screws.



## D. Complete

1. Replace the back cover, stand and refasten eight screws.



2. Replace the cover, complete.

