

<<Media Player Classic Home Cinema 安裝指南>>

1.更新 DirectX

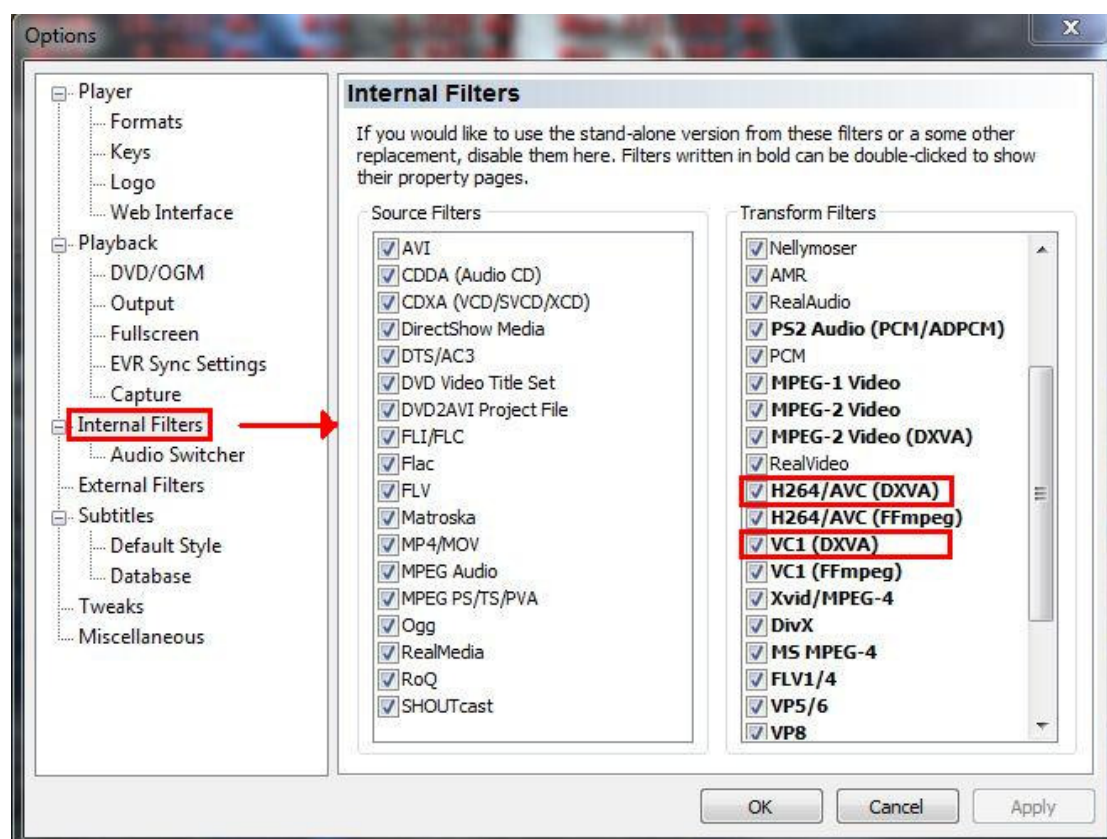
<http://www.microsoft.com/downloads/en/details.aspx?displaylang=en&FamilyID=2da43d38-db71-4c1b-bc6a-9b6652cd92a3>

2.下載並安裝 Media Player Classic Home Cinema

<http://mpc-hc.sourceforge.net/>

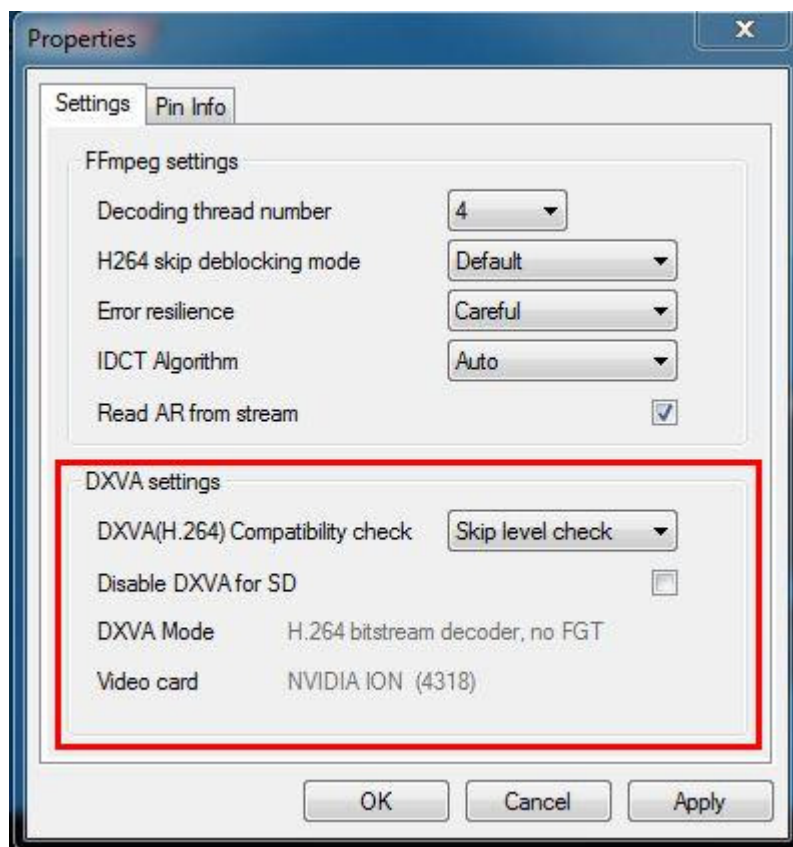
3.啓動 DirectX VA(DXVA)來調用 GPU 作加速.

4.於 Options 內的 Internal Filters 確認已勾選 H264/AVC(DXVA)和 VC1(DXVA)項目



<<如何確認 DXVA 已啓用.>>

方法 1.於播放影片的時候，滑鼠右鍵點擊 Filters 選擇 MPC Video Decoder 即會顯示 DXVA 狀態訊息，只有顯示 Not using DXVA 訊息代表您 DXVA 沒有正常啓動



方法 2. 點選 Display Stats 來顯示當前訊息，只有顯示 Not using DXVA 訊息代表您 DXVA 沒有正常啓動.

(Display Stats 點選方式 View =>Renderer Settings =>Display Stats)



<<DXVA GPU 加速開啓與未開啓之差異>>

經開啓加速後的影片撥放順暢且 CPU 使用率也降低到 23% 上下,可以見得當開起 DXVA 加速後可有效提高撥放流暢度以及降低 CPU 使用率。

DXVA Enabled

Frame rate : 24.057 (41.708 ms = 23.976, I) (41.708 ms = 23.976 L, 0.451 StdDev)
Settings : EVR GPUFlushBV GPUFlushAP VS AccvS 0-255
Formats : Surface X8R8G8B8 Backbuffer X8R8G8B8 Display X8R8G8B8 Device I
Refresh rate : 59.92700 Hz SL: 1234 (59 Hz) Last Duration: 42.000000
Sync offset : Min = -34.247 ms, Max = -6.651 ms, StdDev = 8.990 ms, Avr = -20.851 ms
Jitter : Min = -24.889 ms, Max = +25.213 ms, StdDev = 12.907 ms
Subtitles : Free 3 Allocated 0 Buffered 0 QueueStart 0.000 QueueEnd 0.000
VBlank Wait : Start 573 End 600 Wait 0.482 ms Lock 0.148 ms Offset 32
Paint Time : Draw 15.863 ms Min 2.196 ms Max 275.768 ms
Raster Status: Wait 0.193 ms Min 0.062 ms Max 140.677 ms
Buffering : Buffered 4 Free 1 Current Surface 3
Video size : 1920 x 1080 (AR = 16 : 9)
DXVA2 : H.264 bitstream decoder, no FG1
Render device: NVIDIA ION
DirectX SDK : 43
Mixer output : RGB32

CPU Usage: 23%

Internal Filters:
Source Filters:
Transform Filters:
 H264/AVC (DXVA)
 VC1 (FFmpeg)

DXVA Disabled

Frame rate : 9.343 (41.708 ms = 23.976, I) (41.708 ms = 23.976 L, 0.451 StdDev)
Settings : EVR GPUFlushBV GPUFlushAP VS AccvS 0-255
Formats : Surface X8R8G8B8 Backbuffer X8R8G8B8 Display X8R8G8B8 Device I
Refresh rate : 59.67523 Hz SL: 1242 (59 Hz) Last Duration: 41.000000
Sync offset : Min = -1118.877 ms, Max = +7.123 ms, StdDev = 320.958 ms, Avr = -493.311 ms
Jitter : Min = -76.114 ms, Max = +13.698 ms, StdDev = 22.639 ms
Subtitles : Free 0 Allocated 0 Buffered 0 QueueStart 0.000 QueueEnd 0.000
VBlank Wait : Start 727 End 600 Wait 15.085 ms Lock 4.637 ms Offset 32
Paint Time : Draw 24.584 ms Min 2.148 ms Max 299.664 ms
Raster Status: Wait 2.592 ms Min 0.088 ms Max 17.160 ms
Buffering : Buffered 1 Free 4 Current Surface 3
Video size : 1920 x 1080 (AR = 16 : 9)
DXVA : Not using DXVA
Render device: NVIDIA ION
DirectX SDK : 43
Mixer output : RGB32

CPU Usage: 45%

Internal Filters:
Source Filters:
Transform Filters:
 H264/AVC (DXVA)
 VC1 (FFmpeg)

#由於目前 HD 影片所使用之解碼器、壓縮率、檔案格式等...各異,因此本教學為一般普遍所使用的 Media Player Classic Home Cinema 撥放軟體簡易安裝設定範本,若在撥放其他 HD 格式之影片有不順暢情況,建議加入其對應解碼器至撥放軟體,以能夠透過解碼器的幫助使 HD 影片更順暢。