

## <<Media Player Classic Home Cinema Installation Guide>>

### 1. Update DirectX

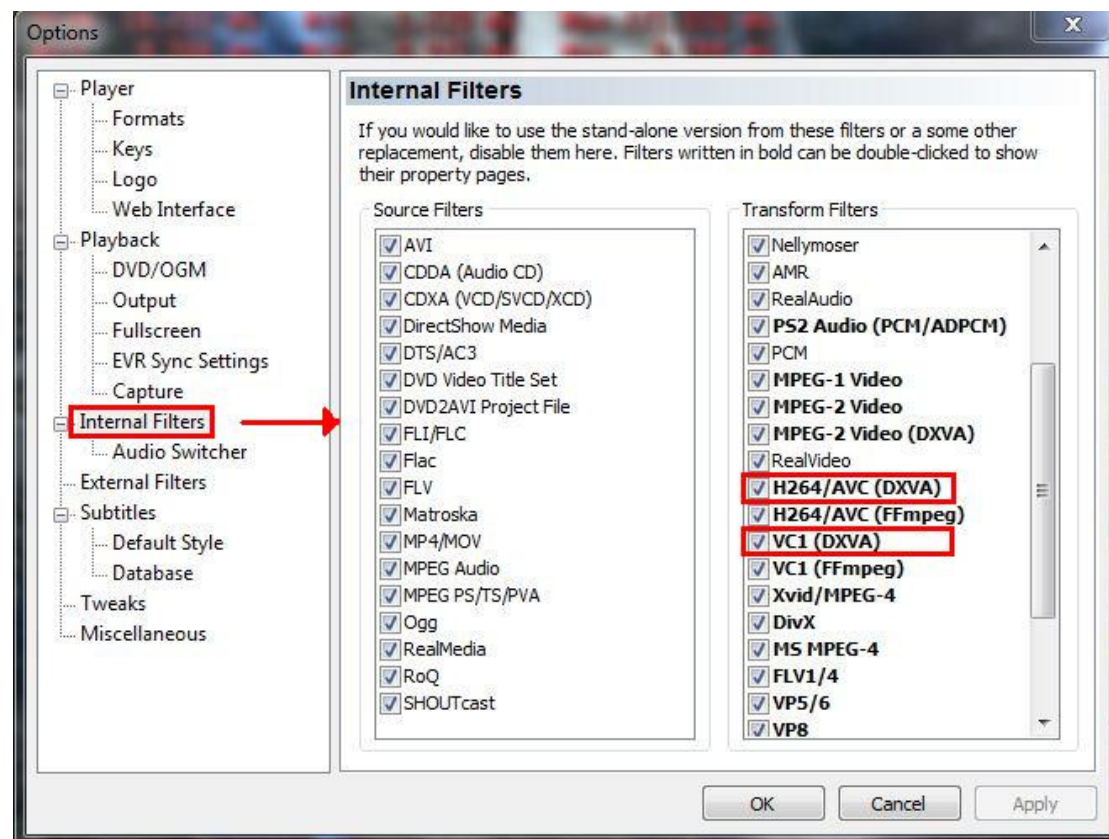
<http://www.microsoft.com/downloads/en/details.aspx?displaylang=en&FamilyID=2da43d38-db71-4c1b-bc6a-9b6652cd92a3>

### 2. Download the Media Player Classic Home Cinema and install it.

<http://mpc-hc.sourceforge.net/>

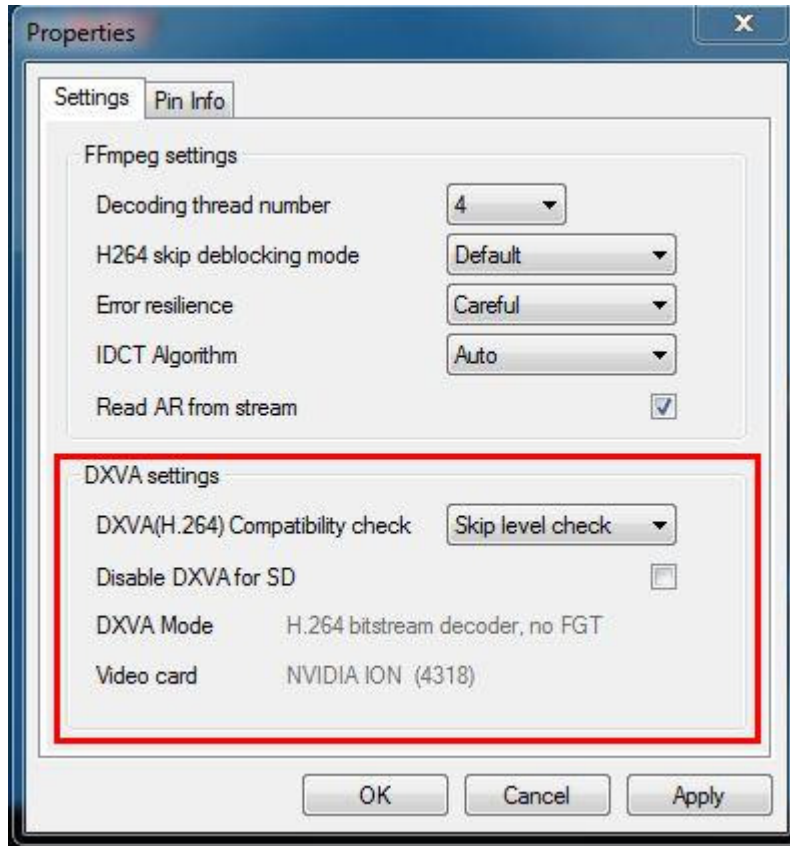
### 3. Enabled the DirectX VA(DXVA) to call GPU for accelerated.

### 4. Make sure H264/AVC(DXVA) and VC1(DXVA) options in the Internal Filters are both checked.



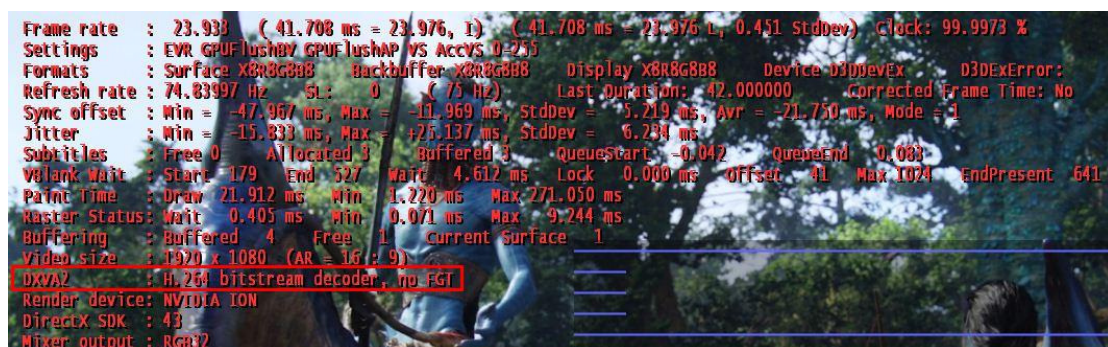
<< How to confirm the DXVA is enabled >>

Method 1: When playback movie on MPC, please right click on the MPC window and select “MPC Video Decoder Properties.” Under DXVA settings, it will appear DXVA status, if DXVA is enabled, it will provide detail information on DXVA and Video card, otherwise it will appear “Not using DXVA” when DXVA is not enabled.



Method 2: Click Display Stats to show the current status message, “Not using DXVA” wording only appears when DXVA is not enabled.

(How to get to the “Display Stats”: select “View” on tool bar => “Renderer Settings” => “Display Stats”)



<<The differences between enabled and disabled DXVA GPU acceleration>>

After DXVA GPU acceleration is enabled, the CPU usage rate will reduced to 23% and provide a smoother playback experience, this definitely shows when DXVA is enabled it will improve the movie playback and lower CPU usage at the same time.

The image displays two side-by-side screenshots of the Media Player Classic Home Cinema interface, comparing system performance and internal filter settings when DXVA is enabled versus disabled.

**Left Screenshot: DXVA Enabled**

- System Statistics:** Frame rate: 24.057 (41.708 ms = 23.976, I) (41.708 ms = 23.976 L, 0.451 StdDev). CPU Usage: 23%. Physical Memory: 34%.
- Internal Filters:** Under 'Transform Filters', 'H264 (AVC) (DXVA)' and 'VC1 (FFmpeg)' are checked and highlighted with red boxes.
- Task Manager:** Shows CPU Usage at 23%.

**Right Screenshot: DXVA Disabled**

- System Statistics:** Frame rate: 9.343 (41.708 ms = 23.976, I) (41.708 ms = 23.976 L, 0.451 StdDev). CPU Usage: 45%. Physical Memory: 31%.
- Internal Filters:** Under 'Transform Filters', 'H264 (AVC) (DXVA)', 'H264 (AVC) (FFmpeg)', and 'VC1 (DXVA)' are checked and highlighted with red boxes.
- Task Manager:** Shows CPU Usage at 45%.

The comparison shows that enabling DXVA significantly reduces CPU usage from 45% to 23% and provides a smoother playback experience (higher frame rate).

#Due to different codings, compress ratios, and file formats of HD videos, Therefore, we provide a simple and easy installation guide of Media Player Classic Home Cinema playback software for general purpose only. If experienced difficulties or troubles when played other HD format, please install the corresponding codec/decoder or software to enjoy the full experiences of HD videos.