
XPC User Guide

For the : XS35

Shuttle®

XPC Installation Guide

Copyright

©2010 by Shuttle® Inc. All Rights Reserved.

No part of this publication may be reproduced, transcribed, stored in a retrieval system, translated into any language, or transmitted in any form or by any means such as electronic, mechanical, magnetic, optical, chemical, photocopy, manual, or otherwise, without prior written permission from Shuttle® Inc.

Other brands and product names used herein are for identification purposes only and may be trademarks of their respective owners.

Disclaimer

Shuttle® Inc. shall not be liable for any incidental or consequential damages resulting from the performance or use of this product.

Shuttle® Inc. makes no representation or warranty regarding the contents of this manual. Information in this manual had been carefully checked for accuracy; however, no guarantee is given as to the correctness of the contents. For continuing product improvement, Shuttle® Inc. reserves the right to revise the manual or make changes to the specifications of this product at any time without notice and obligation to any person or entity regarding such change. The information contained in this manual is provided for general use by customers.

This device complies to Part 15 of the FCC Rules. Operation is subject to the following two conditions:

1. This device may not cause harmful interference.
2. This device must withstand any background interference including those that may cause undesired operation.

Trademarks

Shuttle is a registered trademark of Shuttle Inc.

Intel and Pentium are registered trademarks of Intel Corporation.

PS/2 is a registered trademark of IBM Corporation.

AWARD is a registered trademark of Award Software Inc.

Microsoft and Windows are registered trademarks of Microsoft Corporation.

General Notice

Other brand and product names used herein are for identification purposes only and may be trademarks of their respective owners.

Safety Information

Read the following precautions before setting up a Shuttle XPC.

CAUTION

Incorrectly replacing the battery may damage this computer. Replace only with the same or equivalent as recommended by Shuttle. Dispose of used batteries according to the manufacturer's instructions.

Laser compliance statement

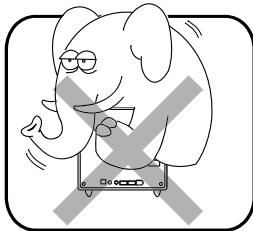
The optical disc drive in this server is a laser product. The drive's classification label is located on the drive.

CLASS 1 LASER PRODUCT

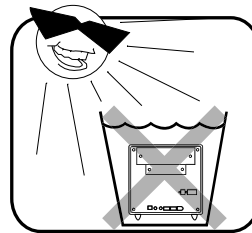
CAUTION : INVISIBLE LASER RADIATION WHEN OPEN.
AVOID EXPOSURE TO BEAM.

Installation Notices

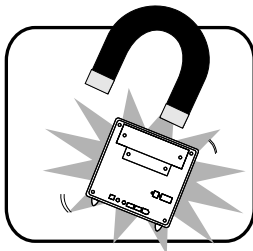
Do not place this device underneath heavy loads or in an unstable position.



Do not expose this device to high levels of direct sunlight, high-humidity or wet conditions.



Do not use or expose this device around magnetic fields as magnetic interference may affect the performance of the device.



Do not block the air vents to this device or impede the airflow in any way.

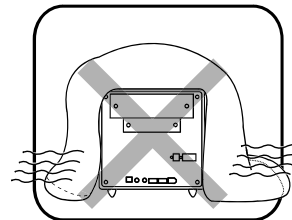



TABLE OF CONTENTS

Driver and Software Installation.....	1
Mainboard Driver DVD	1
User Manuals	2
Appendix.....	3
Starting BIOS	3
Enter the BIOS	3
Main Setup	6
Advanced	9
Security Menu	10
Boot Menu	12
Exit Menu	13
Exit	18

■ Motherboard Driver DVD

 The DVD contents attached in XS35 Series motherboard are subject to change without notice.

The Motherboard Driver DVD contains all the motherboard drivers necessary to optimize the performance of this Shuttle Xvision in a Windows® OS. Install these drivers after installing Microsoft® Windows®.

Insert the attached DVD into your DVD-ROM drive. The DVD AutoRun screen should appear. If the AutoRun screen does not appear, double click on Autorun icon in My Computer to bring up Shuttle Mainboard Software Setup screen.

Navigation Bar Description :

- ☞ Auto Install Driver/ Utility.
- ☞ Install Nvidia VGA Driver.
- ☞ User Manuals - Motherboard Manual, Quick Guide.
- ☞ Link to Shuttle Website - Link to shuttle website homepage.
- ☞ Browse this DVD - Allows you to see contents of this DVD.



■ User Manuals

- ☞ Motherboard Manual
- ☞ Quick Guide



BIOS SETUP

■ 1.1 About BIOS Setup

■ 1.1.1 When to Use BIOS Setup ?

You may need to run the BIOS Setup when:

- An error message appears on the screen during the system booting up and is requested to run SETUP.
- You want to change the default settings for customized features.
- You want to reload the default BIOS settings.

■ 1.1.2 How to Run BIOS Setup ?

To run the BIOS Setup Utility, turn on the notebook and press the [Del] key during the POST procedure.

If the message disappears before you respond and you still wish to enter Setup, either restart the system by turning it OFF and ON, or simultaneously pressing [Ctrl]+[Alt]+[Del] keys to restart.

Be noted that the screen snaps and setting options in this chapter are for your references only. The actual setting screens and options on your Notebook may be different because of BIOS update.

The setup uses a menu interface to allow the user to configure their system and the features are briefly listed as follow.

Press F11 key for Boot Menu.

■ 1.2 BIOS Setup Menu

Once you enter the BIOS Setup Utility, the Main Menu will appear on the screen. Select the tags to enter the other menus.

Info Menu

Show System Information about BIOS version,CPU features and Manufacturer

Main Menu

Show system overview about memory size, main HDD or ODD and setting of system time and date.

Advanced Menu

To select the XD feature enable or disable XD feature only work with Intel platform + Windows

Security Menu

Install or clear the password settings for supervisor and user.

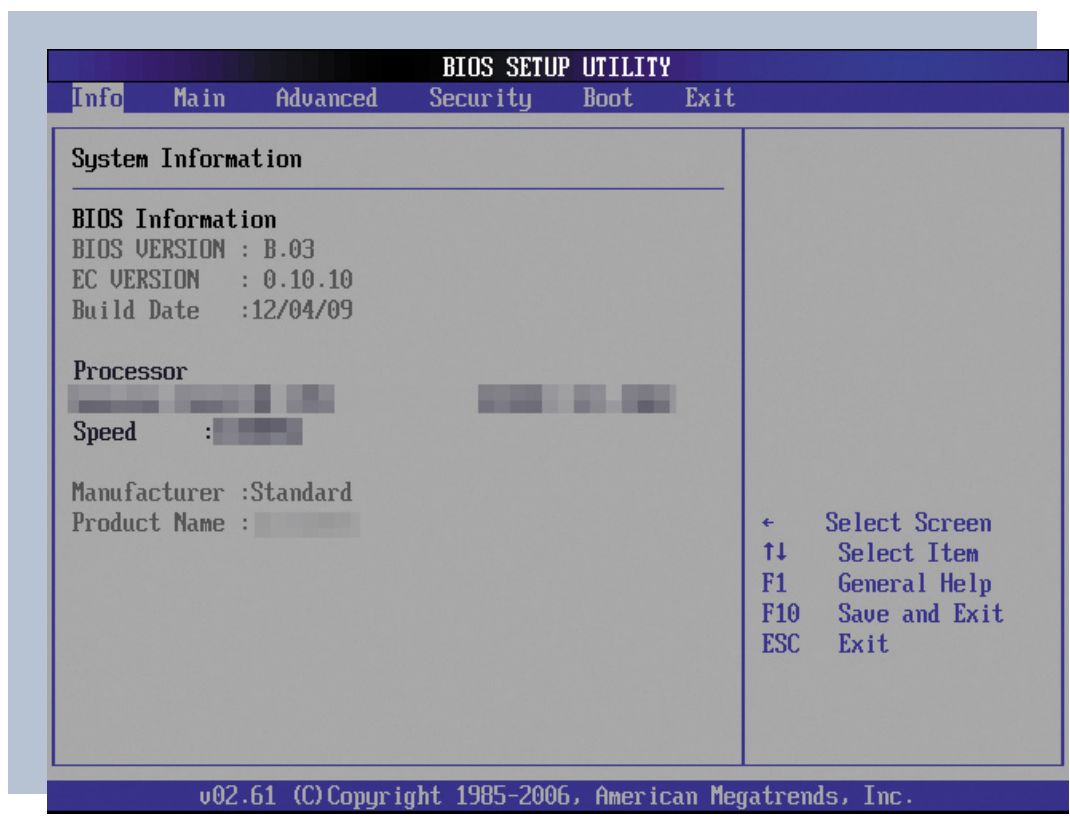
Boot Menu

Configure Settings during System Boot.

EXIT Menu

Save or discard the changes before leaving the BIOS Setup Menu.

■ 1.2.1 Info Menu



- System Information

This item provides the information about the firmware, processor, and system memory.

- BIOS Information

BIOS VERSION : BIOS version

EC VERSION : EC version

Build Date : BIOS Build Date

- Processor

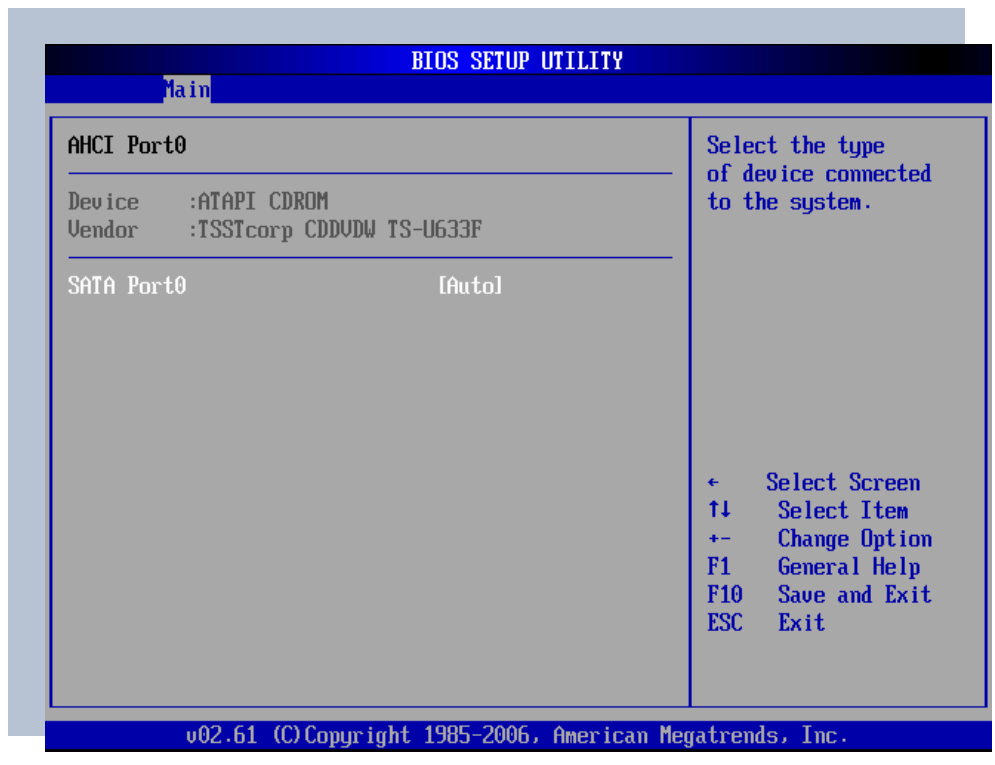
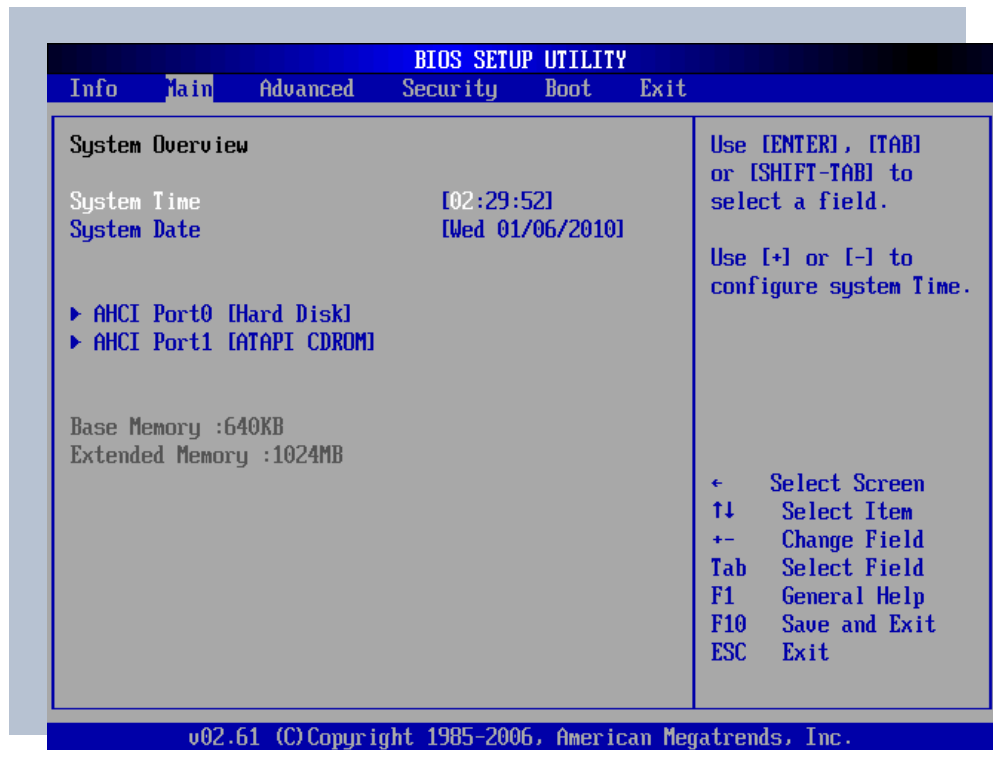
Processor Type

- Manufacturer

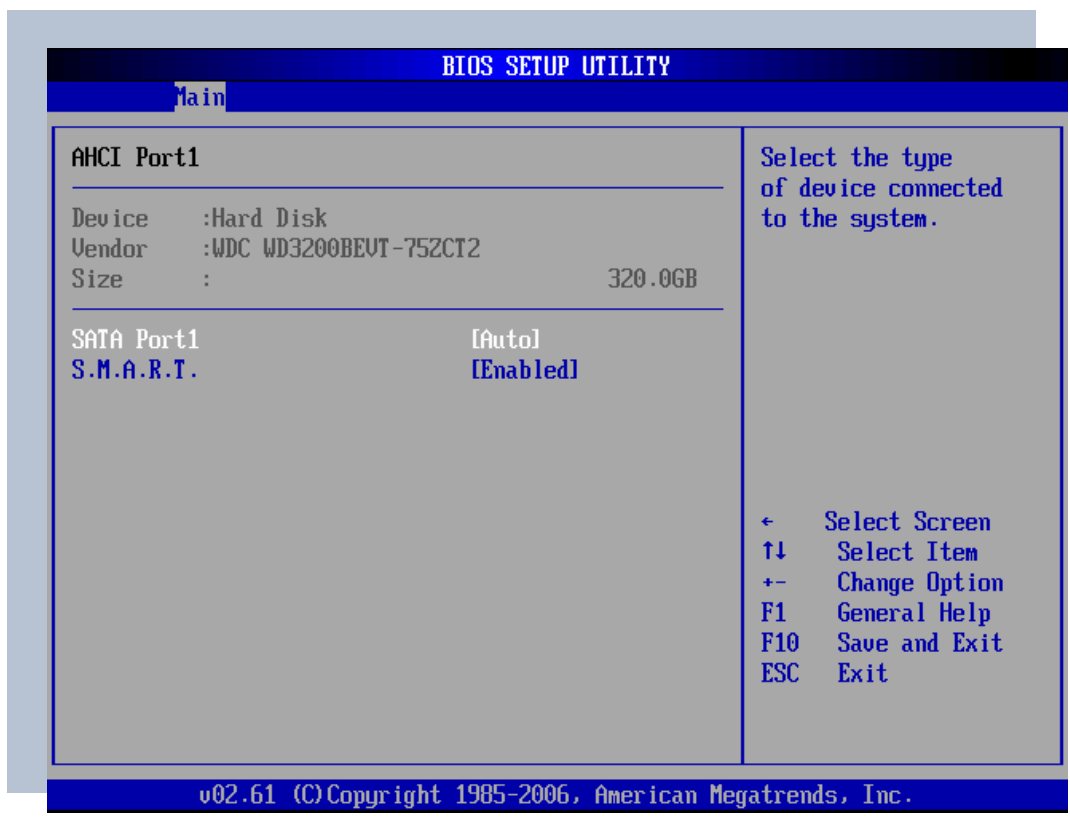
Manufacturer Name

- Product Name:Product Name

■ 1.2.2 Main Menu



■ 1.2.2 Main Menu



- System Date

This item allows you to set the system date. The date format is [day:month:date:year].

Use [ENTER], [TAB] or [SHIFT-TAB] to select a field.

- System Time

This item allows you to set the system time. The system clock will go on no matter you shut down the PC or get into sleep mode. The time format is [hour:minute:second].

Use [+] or [-] to configure system Time.

Day	Day of the week, from Sun to Sat, which is determined by BIOS (read-only).
Month (Month)	The month from 01 (January) to 12 (December).
Date (Date)	The date from 01 to 31.
Year (Year)	The year can be adjusted by users.

- AHCI Port0

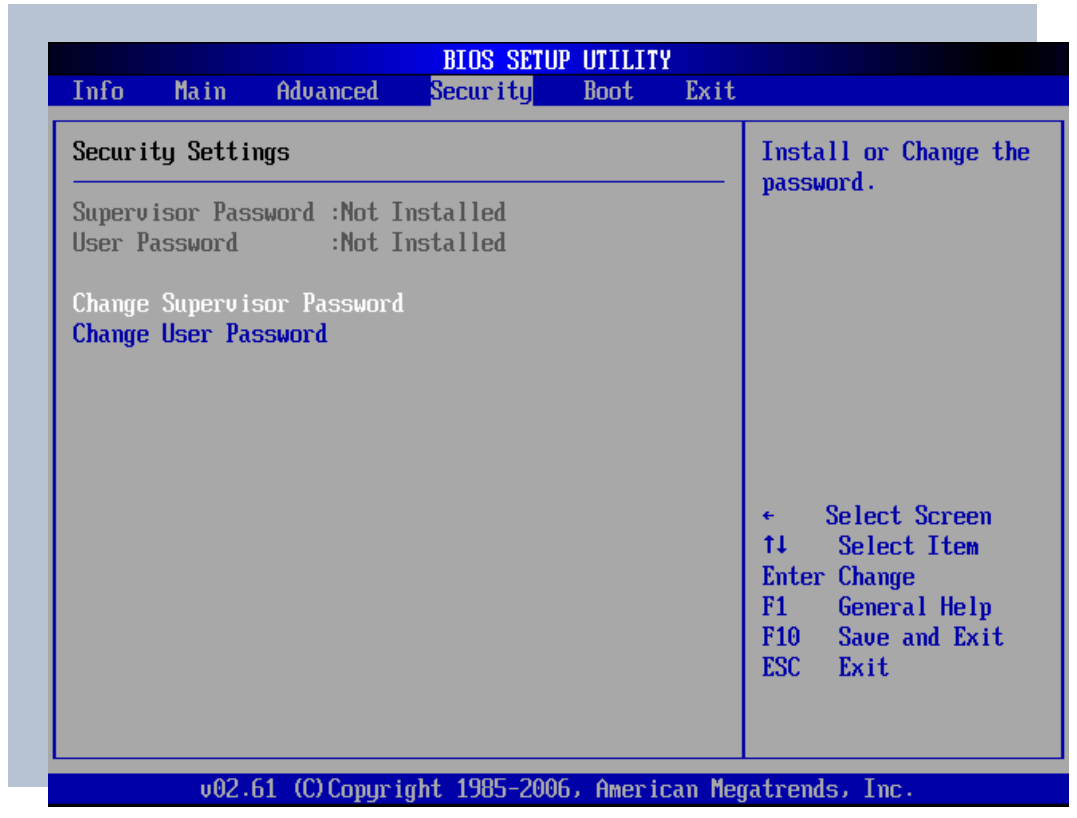
While entering setup, BIOS auto detects the presence of AHCI devices. This displays the status of auto detection of AHCI devices.

■ 1.2.3 Advanced Menu



- Execute-Disable Bit Capability [Enabled]:
When disabled, force the XD feature flag to always return 0.

■ 1.2.4 Security Menu



- Change Supervisor Password

When this item is selected, a message box shall appear on the screen as below:

Enter New Password

Type a maximum of 6-digit password and press [Enter]. The password typed now will replace any previously set password from CMOS memory. You may also press [ESC] to abandon new password setting. When the Supervisor Password is set, new items Change User Password and Password Check will be added in the menu. Select Change User Password to give or to abandon password setting

same as Change Supervisor Password item above.

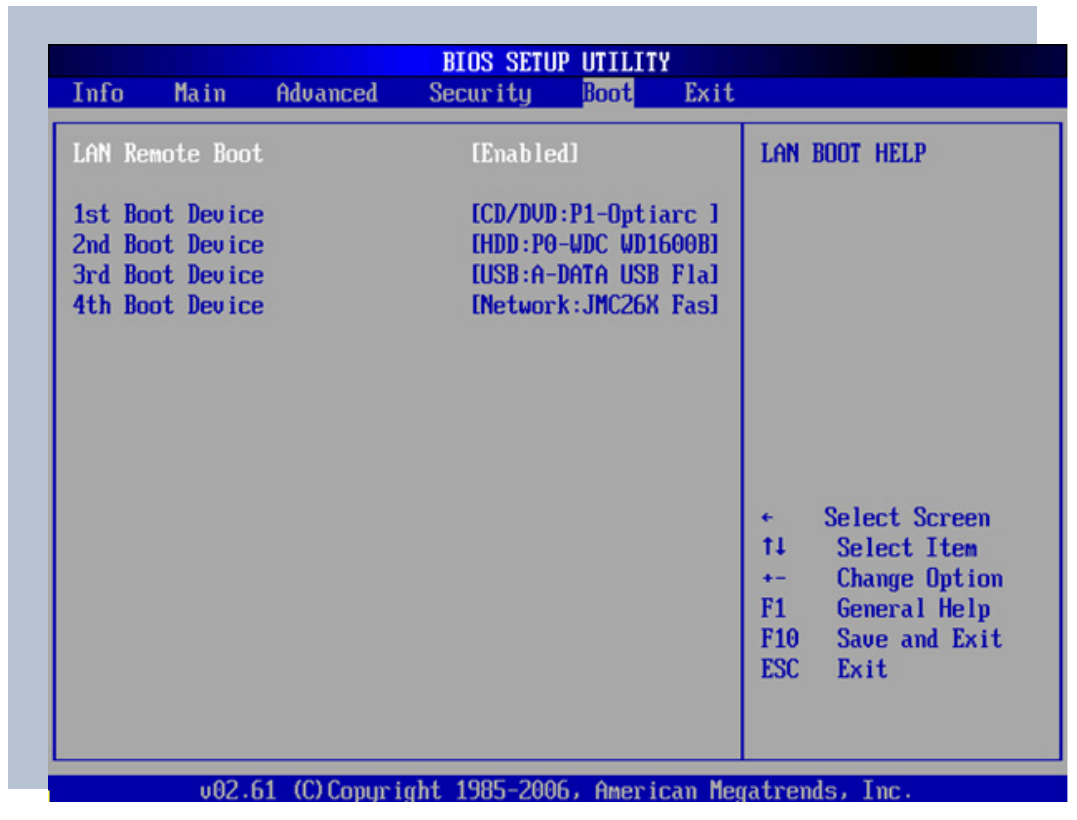
Note that Supervisor Password field allows users to enter and change the settings of the BIOS SETUP UTILITY, while User Password field only allows users to enter the BIOS SETUP UTILITY without having the authorization to make any change.

The Password Check item is used to specify the type of BIOS password protection that is implemented. Settings are described below:

Setup	The password is required only when users try to access to BIOS SETUP UTILITY.
Always	The password is required every time when the Notebook is powered on or when users try to access to BIOS SETUP UTILITY.

To clear a set Supervisor Password/ User Password, just press [Enter] under Change Supervisor Password/ Change User Password field when you are prompted to enter the password. Please note that when Supervisor Password has been cleared, User Password will be cleared as well. A message box will pop up confirming password will be disabled. Once the password is disabled, the system will boot and user can enter setup without entering password.

■ 1.2.5 Boot Menu



- Boot
Configure Settings during System Boot.

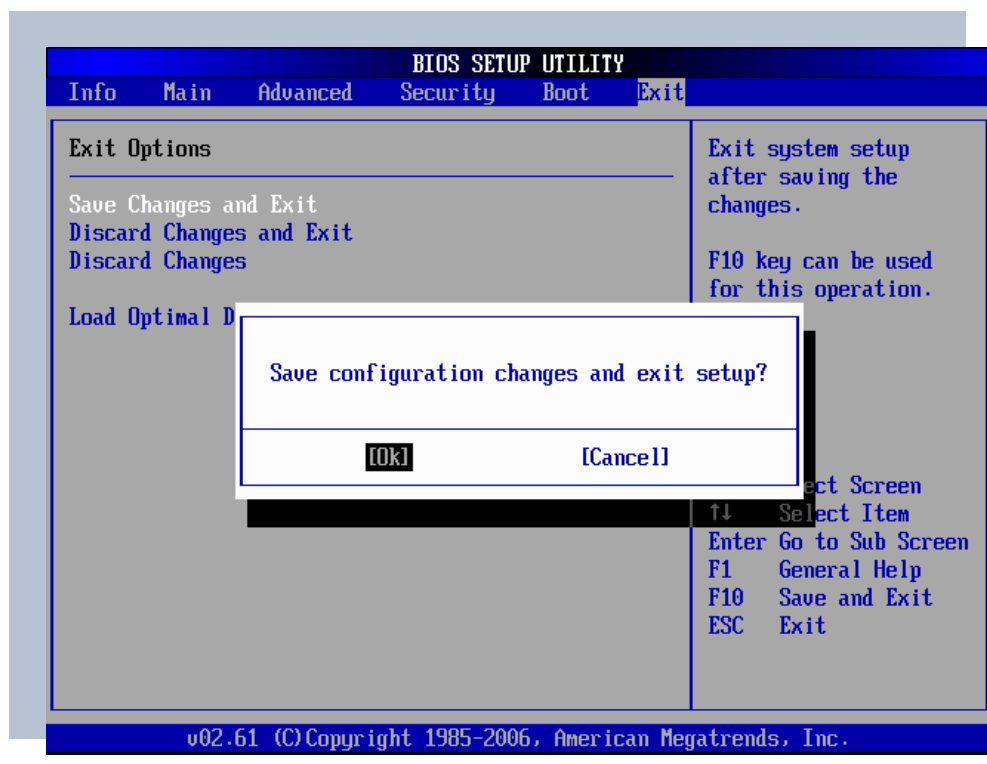
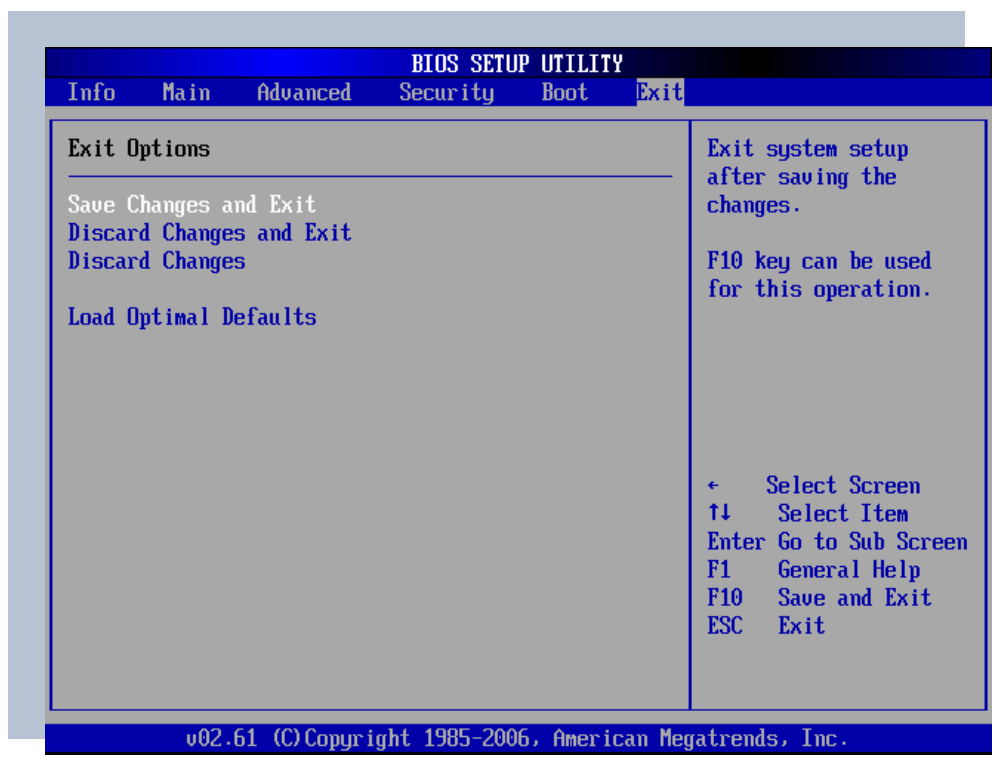
- LAN Remote Boot [Enable]:
Boot from LAN or not.

- 1st Boot Device
- 2nd Boot Device
- 3rd Boot Device

Specifies the boot sequence from the available devices.

A device enclosed in parenthesis has been disabled in the corresponding type menu.

■ 1.2.6 Exit Menu



- **Save & Exit Setup**

Exit system setup after saving the changes.

F10 key can be used for this operation.

- **Discard Changes and Exit**

Exit system setup without saving any changes.

ESC key can be used for this operation.

- **Discard Changes**

Discards changes done so far to any of the setup questions.

F7 key can be used for this operation.

- **Load Default Settings**

Load Optimal Default values for all the setup questions.

F9 key can be used for this operation.