



Revolution of Hardcore Platform SP35P2



The new Shuttle SP35P2 featuring the new Intel® P35 chipset, supports the latest Intel® multi-core processors up to FSB 1333MHz and upcoming 45nm platform. Users are able to take advantage of higher memory performance with less power consumption to run the even the most memory intensive applications such as high-definition video and 3D visualization with ease.

For the audio enthusiast, the Shuttle SP35P2 features Intel® High Definition Audio, with heart pounding 7.1 channels surround sound, to deliver the most natural and engrossing multimedia entertainment and gaming experience available.





SP35P2

Intel® P35 Express Chipset

Optimized system memory capabilities and chipset over-speed protection removed for maximum over-clocking performance, supporting the latest Intel® multi-core processors up to FSB 1333MHz, including the upcoming 45nm platform, with its record breaking performance and greater energy efficiency.



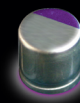
OASIS Cooling Technology

The newly designed OASIS cooling technology deliver a unique system of heat-sinks covering the MOSFET modules, the north bridge as well as the south bridge that effectively dissipates heat without the use of fans. Featuring an all-new Heat pipe design, Shuttle OASIS allows users to enjoy longer component lifetime through lower temperatures, added system stability and silent operation.



All Solid Capacitors Motherboard Design

All solid capacitors design is the new trend for Shuttle's motherboard and guaranteed to deliver maximum stability, reliability and longer system lifetime for the ultimate PC gaming and entertainment experience.



80 PLUS® Certified Power Supplies

The 80 PLUS® performance specification requires power supplies in computers and servers to be 80% or greater energy-efficient. This makes an 80 PLUS® certified power supply more than 33% more efficient than current power supplies.



User Friendly Dynamic OverClock Feature

user can easy to over clock the system through the bios. From 3%, 5%, 7%, 10%, 15%, to 20%.



Specification

FORM FACTOR

- Shuttle Form Factor 325(L)x210(W)x220(H)mm
- Shuttle "P2" chassis

PROCESSOR

- Intel® Core™ 2 Quad / Core™ 2 Duo / Core™ 2 Duo E4000 Series / Dual-Core E2000 series, Celeron 400 series Processor
- 800/1066/1333 MHz FSB
- LGA775 package

CHIPSET

- North Bridge Intel® P35
- South Bridge ICH9R

MEMORY

- 4 x DDR2 667/800MHz DIMM Slots (OC to 1066MHz)
- Support dual channel 2GB per DIMM (Max 8GB)

AUDIO

- Realtek ALC888
- Support Analog 7.1 channel output
- Support Digital S/PDIF in/out

ETHERNET

- Marvell 88E8056 (PCI-E Interface)
- IEEE 802.3u 1000Base-T compliant
- 10Mb/s, 100Mb/s and 1000Mb/s operation
- Support Wake-On-LAN

STORAGE INTERFACE

- 1* UltraDMA 100 IDE channel connector
- 4* On board SATA 3.0Gb/s connectors
- 2* eSATA connectors in back panel
- 1* Floppy connector
- NCQ support

POWER

- 400W ATX Power supply
- Input 100 - 240V AC
- 80 PLUS certified
- Power Plug region specific

OVERCLOCKING

- CPU Frequency, CPU Voltage, RAM Frequency, RAM Voltage
- Dynamic OverClock

EXPANSION BAY

- 3* 3.5" bay
- 1* 5.25" bay

FRONT PANEL

- 2* USB 2.0 ports
- 1* mini IEEE1394
- 1* Mic in
- 1* Earphone out
- 1* Power-on button
- 1* Reset button

- 1* Power indicator - blue
- 1* HDD indicator - orange

BACK PANEL

- 1* PCI Express x16 slot
- 1* PCI slot
- 4* USB 2.0 ports
- 1* RJ45 Gigabit Ethernet port
- 1* Audio Line in connector
- 1* Audio Front out connector
- 1* Audio Rear surround connector
- 1* Audio Side surround connector
- 1* Audio Center/Bass connector
- 1* SPDIF In/ Out
- 1* Coaxial Out
- 2* e-SATA connectors
- 1* IEEE 1394 port
- 1* Clear CMOS button
- 1* Wireless Antenna fixture

ACCESSORIES

- XPC Multilanguage Quick User Guide
- XPC DVD Driver
- 1* Power cord
- 1* IDE cable (pre-install)
- 2* SATA cable (pre-install)
- 1* Floppy cable
- Screws
- Heat sink Compound