

# PC50 *Silent X 300W Power Supply*



## FEATURES

**SFF compatible 300W Power Supply**  
**Serial ATA ready**  
**Active PFC**  
**+5V Standby at 2.0A**  
**+3.3V Remote sensing**  
**Smart Fan Temp-Speed control**  
**Energy Star compliant**  
**OVP/OTP/OPP/UVP/OC protection**  
**Designed for the XPC**

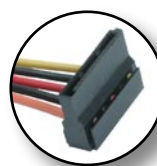


(1) ATX 12V

(1) ATX



(1) FDD



(2) SATA



(3) Molex

## SPECIFICATIONS

<b>Model</b>		PC50
<b>Type</b>		300W SFF power supply
<b>Input</b>	<b>Input Voltage</b>	90~264V AC
	<b>Input Current</b>	7A/3.5A (100/240V AC)
	<b>Frequency</b>	63Hz / 47Hz
	<b>Efficiency</b>	>70% at full load
<b>Output</b>	<b>Hold up time</b>	>16ms at full load (@115V AC)
	<b>Rise Time</b>	<20ms at full load, nominal line
	<b>Short circuit protection</b>	latch off
	<b>Power good signal</b>	TTL compatible
<b>Environmental</b>	<b>Operating Temp</b>	10°C ~ 50°C
	<b>Storage Temp</b>	-40°C ~ 70°C
	<b>MTBF</b>	>100,000 hours at 75% load, 25°C
	<b>Noise</b>	<30dB
<b>Safety</b>		CUL, TUV, CB, CCC
<b>EMI</b>		FCC class B, CE, BSMI, CCC
<b>Dimensions</b>	<b>Size</b>	190 x 82 x 43 mm (l x w h)
	<b>Cable length</b>	Cable lengths designed for the XPC
<b>XPC compatibility</b>		SS51G, SS56G, SB51G, SB52G2, SB61G2, SB62G2, SB65G2, SB75G2, SK41G, SN41G2, SN45G, SK43G, ST61G4, SB83G5, SB83G5C, SB77G5, SS58G2



Shuttle Inc.® 2005, All Rights Reserved.

\* All other brand and product names within this page are the property of their respective owners.

\* Specifications subject to change without prior notification.

*We create!*